

COMBINED  
ANNUAL EDUCATION RESULTS REPORT  
2009/2010  
3- year Plan 2009-2012



**NorthStar**  
ACADEMY  
Any Time. Any Place.



Box 1405  
Didsbury, Alberta  
T0M 0W0  
(403) 335-9587 (phone)  
(403) 335-9513 (fax)

## **Accountability Statement**

The annual education results report for Golden Hills School Division #75 for the 2009/010 school year was prepared under the direction of the board in accordance with the responsibilities under the School Act and the Government Accountability Act. The board is committed to using the results in this report, to the best of our abilities, to improve the outcomes for students in our jurisdiction. We will use the results to develop sound strategies for our three-year education plan to ensure that all our students can acquire the knowledge, skills and attitudes they need to be self-reliant, responsible, caring and contributing members of society.

## **Communicating the Annual Results Report**

NSA communicates its major accomplishments and results of the past year to parents and the school community by:

- Including highlights of the 3 year–plan and AERR in the school’s news area.
- Making the 3 year–plan and AERR accessible to parents and the school community through the administration office.
- Highlighting parts of the 3 year–plan and AERR in newsletters

## **NorthStar Academy is an education from home specialist!**

With four choices to help support Christian Education, NorthStar Academy Canada is meeting the individual needs of its students.

NorthStar Academy Canada offers an online program, a home schooling program and an individualized program that combines home schooling and online learning.

### **Online**

Our Alberta, accredited education for grades 5 to 12 provides students with the highest quality online education possible. NorthStar Academy Canada has a history of excellence Evangelical Christian Education and has developed our online school to be effective and easy to use while ensuring a dynamic and interesting learning environment for our students around the world.

### **Independent**

If families are looking for detailed lesson plans, full daily and weekly lessons, and other teaching resources to help support home schooling, NorthStar's online lessons are available as a solid resource. Detailed online lessons help families enjoy the independence of working at their own pace and from their own place.

### **Traditional Home Schooling**

NorthStar Academy Canada is an education from home specialist and we encourage and support families who desire to meet the individual needs and abilities of their children through home schooling.

### **Blended Online and Home Schooling Program**

God has given each child unique gifts and with NorthStar's Individualized Program, students learn with education that is tailored to their interests, abilities and needs by utilizing a combination of our online course and a home school program.

### **Vision Statement**

NorthStar Academy Canada envisions a world in which Christian Education is accessed easily from anywhere by anyone.

### **Mission**

To empower missionary families, home school families and Christian schools by providing dynamic Christian educational choices which recognizes individual's needs, abilities and goals.

## Highlight of 2009-2010

This is the second year where our accountability results have been published. We are thrilled to have tractable data. Small class sizes mean not all data can be shown.

We are focusing on assessment for learning

We focused on our International Department and advertised to non-Alberta based schools.

We also focus on English as a second language, providing five levels of classes.

## SUMMARY OF ACCOMPLISHMENTS

Many students did not write the grade six and nine achievement tests. As the majority of our families are overseas, they are not able to write. Provincial Achievement tests can only be written by students located in Alberta.

### October 2010 Accountability Pillar Overall Summary

Goal	Measure Category	Measure Category Evaluation	Measure	Northstar Academy - Canada			Alberta			Measure Evaluation		
				Current Result	Prev Year Result	Prev 3 yr Average	Current Result	Prev Year Result	Prev 3 Yr Average	Achievement	Improvement	Overall
Goal 1: High-quality learning opportunities	Safe and Caring Schools	Excellent	Safe and Caring	89.6	90.7	90.7	87.6	86.9	85.4	Very High	Maintained	Excellent
	Student Learning Opportunities	n/a	Program of Studies	57.5	62.7	62.7	80.5	80.3	79.4	Very Low	Maintained	Concern
			Education Quality	91.4	89.4	89.4	89.2	89.3	88.4	Very High	Maintained	Excellent
			Drop Out Rate	10.3	8.8	10.0	4.3	4.8	4.8	Very Low	Maintained	Concern
			High School Completion Rate (3 yr)	*	*	n/a	71.5	70.8	70.9	*	*	*
Goal 2: Excellence in student learning outcomes	Student Learning Achievement (Grades K-9)	Concern	PAT: Acceptable	40.4	33.3	29.6	79.1	78.3	77.2	Very Low	Maintained	Concern
	Student Learning Achievement (Grades 10-12)	n/a	PAT: Excellence	5.8	5.6	2.8	19.4	18.3	18.2	Very Low	Maintained	Concern
			Diploma: Acceptable	57.1	23.5	56.0	83.4	84.3	84.3	Very Low	Maintained	Concern
			Diploma: Excellence	0.0	5.9	4.9	19.0	18.5	19.2	Very Low	Maintained	Concern
			Diploma Exam Participation Rate (4+ Exams)	*	*	n/a	53.5	53.3	53.6	*	*	*
			Rutherford Scholarship Eligibility Rate (Revised)	58.3	55.6	54.7	56.9	57.3	56.7	Intermediate	n/a	n/a
	Preparation for Lifelong Learning, World of Work, Citizenship	n/a	Transition Rate (6 yr)	*	n/a	n/a	59.8	59.2	58.7	*	*	*
			Work Preparation	90.6	90.9	90.9	79.9	79.6	78.9	Very High	Maintained	Excellent
Citizenship			87.5	90.9	90.9	81.4	80.3	78.3	Very High	Maintained	Excellent	
Goal 4: Highly responsive and responsible education system	Parental Involvement	Excellent	Parental Involvement	90.7	85.5	85.5	80.0	80.1	78.6	Very High	Maintained	Excellent
	Continuous Improvement	Excellent	School Improvement	89.0	81.8	81.8	79.9	79.4	77.6	Very High	Maintained	Excellent

#### Notes:

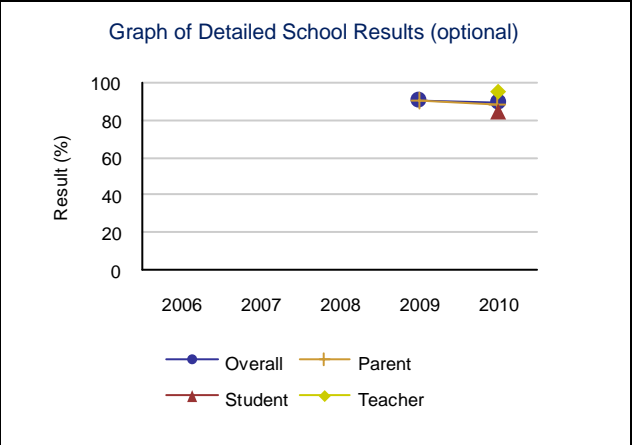
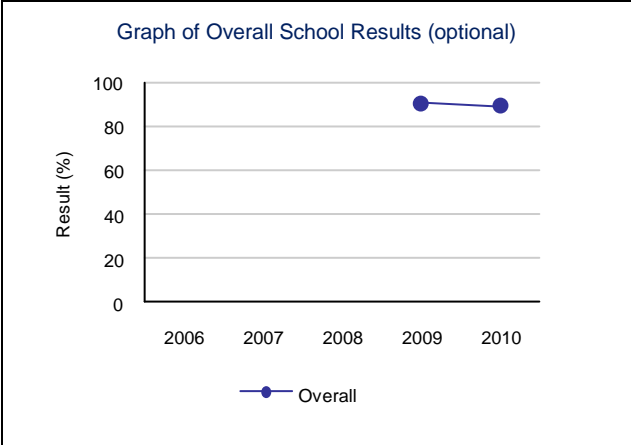
- PAT results are a weighted average of the percent meeting standards (Acceptable, Excellence) on Provincial Achievement Tests. The weights are the number of students enrolled in each course. Courses included: English Language Arts (Grades 3, 6, 9), Science (Grades 6, 9), French Language Arts (Grades 6, 9), Français (Grades 6, 9).

**Goal One: High Quality Learning Opportunities**

*Outcome: Schools environments are safe and caring.*

Performance Measure	Results (in percentages)					Target	Evaluation		
	2006	2007	2008	2009	2010	2010	Achievement	Improvement	Overall
Percentage of teacher, parent and student agreement that: students are safe at school, are learning the importance of caring for others, are learning respect for others and are treated fairly in school.	n/a	n/a	n/a	90.7	89.6	90	Very High	Maintained	Excellent

- Strategies**
- \*Maintain flexible due dates
  - \* Maintain system for regular contact by teacher with students and parents
  - \* Maintain an early alert system so students/ families with problems can be served by the NSA office
  - \* Maintain system for regular contact by teacher with students and at school supervisors



*Outcome: The education system meets the needs of all K–12 students and supports our society and the economy.*

Performance Measure	Results (in percentages)					Target	Evaluation		
	2006	2007	2008	2009	2010	2010	Achievement	Improvement	Overall
Percentage of teachers, parents and students satisfied with the opportunity for students to receive a broad program of studies including fine arts, career, technology, and health and physical education.	n/a	n/a	n/a	62.7	57.5		Very Low	Maintained	Concern
Percentage of teachers, parents and students satisfied with the overall quality of basic education.	n/a	n/a	n/a	89.4	91.4		Very High	Maintained	Excellent

**Comment on Results**

As an online school it is difficult to provide broad programs but NorthStar has started planning activity days where families come together to learn. Our basic education is excellent and we will continue to find innovative ways to offer optional classes.

**Strategies**

- a. Promote RAP
- b. Enhance accessibility of learning programs for all students.
- c. Provide in-service for teachers regarding Alberta Education Curriculum requirements and best practice in teaching
- d. Plan Activity days to bring students and families together.

*Outcome: Children and youth with at risk factors have their needs addressed through timely and effective programs and supports.*

Performance Measure	Results (in percentages)					Target	Evaluation		
	2005	2006	2007	2008	2009	2010	Achievement	Improvement	Overall
Drop Out Rate - annual dropout rate of students aged 14 to 18	*	11.2	*	8.8	10.3	10	Very Low	Maintained	Concern

**Comment on Results**

As we are a transient school for many families, it is common for a student to attend our high school for one or two years while they are traveling and then return to their original province to complete their schooling.

**Strategies**

- a. Promote RAP
- b. Enhance accessibility of learning programs for all students.
- c. Provide in-service for teachers regarding Alberta Education Curriculum requirements and best practice in teaching
- d. Plan Activity days to bring students and families together.

Outcome: High school completion rates are showing continual improvement.

Performance Measure	Results (in Percentages)					Target	Evaluation			Targets		
	2005	2006	2007	2008	2009	2010	Achievement	Improvement	Overall	2011	2012	2013
High School Completion Rate – percentages of students who completed high school within three years of entering Grade 10.	*	*	n/a	*	*		*	*	*			

**Comment on Results**

Due to a small class size, results have been suppressed.

**Strategies**

- a. Promote RAP
- b. Enhance accessibility of learning programs for all students.
- c. Provide in-service for teachers regarding Alberta Education Curriculum requirements and best practice in teaching
- d. Plan Activity days to bring students and families together.

## Goal Two: Excellence in Student Learning Outcomes

Outcome: Students demonstrate high standards in learner outcomes.

Performance Measure	Results (in percentages)					Target	Evaluation			Targets		
	2006	2007	2008	2009	2010	2010	Achievement	Improvement	Overall	2011	2012	2013
Overall percentage of students in Grades 3, 6 and 9 who achieved the acceptable standard on provincial achievement tests.	*	26.5	28.9	33.3	40.4		Very Low	Maintained	Concern	50	50	50
Overall percentage of students in Grades 3, 6 and 9 who achieved the standard of excellence on provincial achievement tests.	*	2.9	0.0	5.6	5.8		Very Low	Maintained	Concern	6	6	6
Overall percentage of students who achieved the acceptable standard on diploma examinations.	*	*	88.5	23.5	57.1		Very Low	Maintained	Concern	60	60	60
Overall percentage of students who achieved the standard of excellence on diploma examinations.	*	*	3.8	5.9	0.0		Very Low	Maintained	Concern	6	6	6

Performance Measure	Results (in percentages)					Target	Evaluation			Targets		
	2005	2006	2007	2008	2009	2010	Achievement	Improvement	Overall	2011	2012	2013
Percentage of students writing four or more diploma exams within three years of entering Grade 10.	n/a	*	n/a	*	*		*	*	*	95	95	95
Percentage of Grade 12 students eligible for a Rutherford Scholarship.	n/a	n/a	53.8	55.6	58.3		Intermediate	n/a	n/a	50	50	50

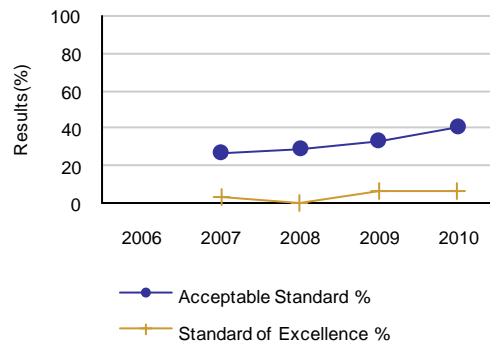
**Comment on Results**

Small class sizes mean one student who struggles with a diploma exam can change the results 33%- 50%. PAT tests can only be written by students located in Alberta and those out side Alberta are calculated as 0%

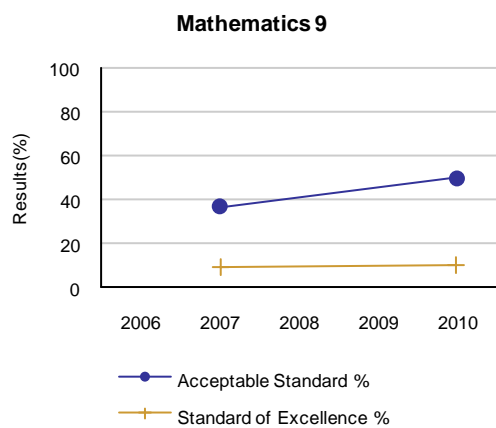
**Strategies**

- a. Promote RAP
- b. Enhance accessibility of learning programs for all students.
- c. Provide in-service for teachers regarding Alberta Education Curriculum requirements and best practice in teaching
- d. Continue to improve lessons by comparing results of Diploma and PAT results with lessons outcomes

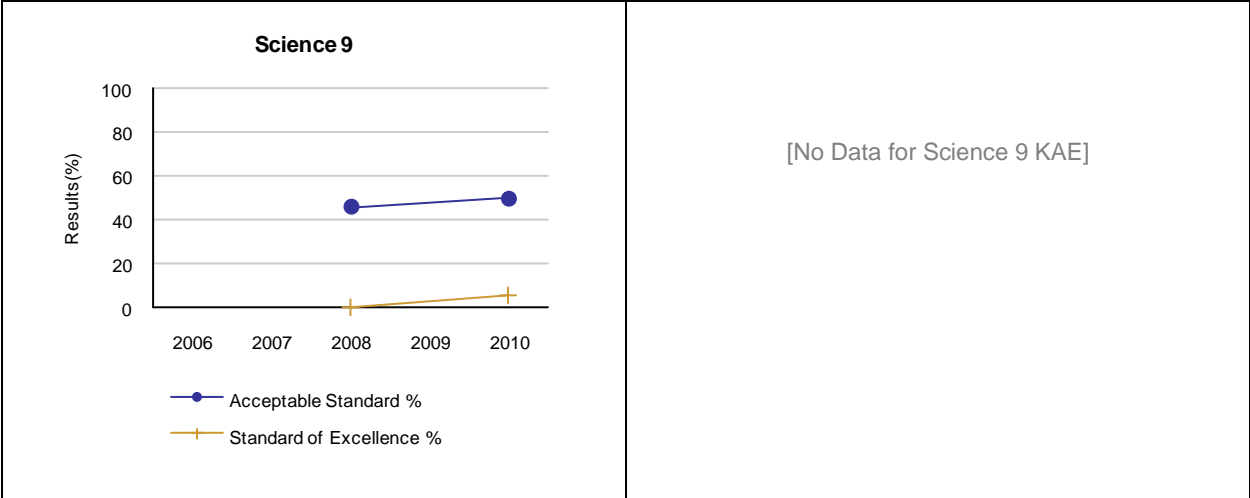
Graph of Overall Provincial Achievement Test Results



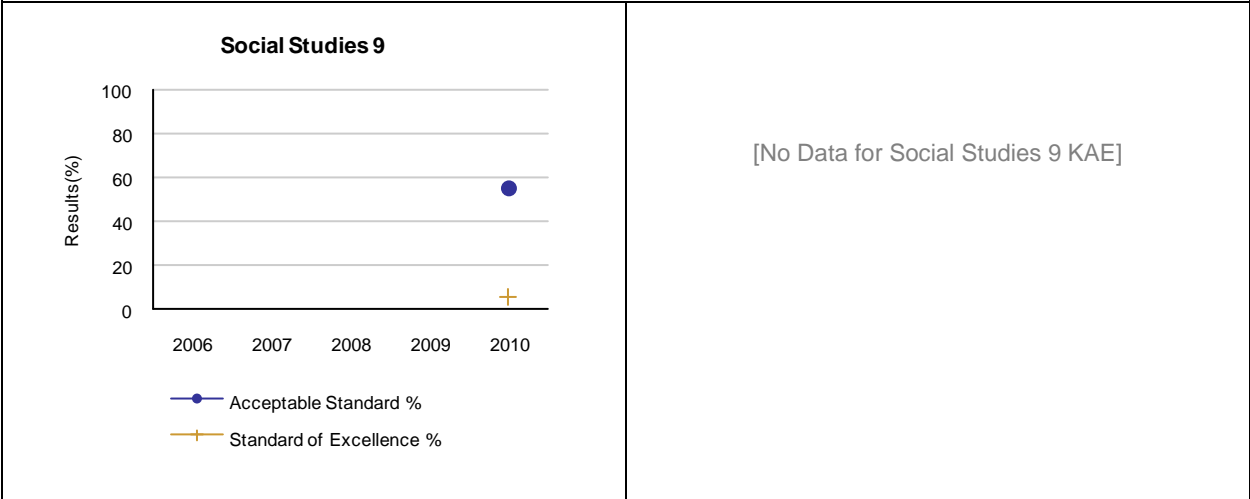
Graph of Provincial Achievement Test Results by Course



[No Data for Mathematics 9 KAE]



Graph of Provincial Achievement Test Results by Course



Note: Data values have been suppressed where the number of students is less than 6. Suppression is marked with an asterisk (\*).

**Measure Evaluation Reference - Achievement Evaluation**

Achievement evaluation is based upon a comparison of Current Year data to a set of standards which remain consistent over time. The Standards are calculated by taking the 3 year average of baseline data for each measure across all school jurisdictions and calculating the 5th, 25th, 75th, and 95th percentiles. Once calculated, these standards remain in place from year to year to allow for consistent planning and evaluation.

The table below shows the range of values defining the 5 achievement evaluation levels for each measure.

Course	Measure	Very Low	Low	Intermediate	High	Very High
English Language Arts 3	Acceptable Standard	0.00 - 72.53	72.53 - 80.49	80.49 - 89.12	89.12 - 93.04	93.04 - 100.00
	Standard of Excellence	0.00 - 6.06	6.06 - 11.35	11.35 - 16.93	16.93 - 20.27	20.27 - 100.00
English Language Arts 6	Acceptable Standard	0.00 - 67.95	67.95 - 78.40	78.40 - 86.09	86.09 - 91.37	91.37 - 100.00
	Standard of Excellence	0.00 - 6.83	6.83 - 11.65	11.65 - 17.36	17.36 - 22.46	22.46 - 100.00
French Language Arts 6	Acceptable Standard	0.00 - 41.69	41.69 - 73.54	73.54 - 92.32	92.32 - 97.93	97.93 - 100.00
	Standard of Excellence	0.00 - 2.72	2.72 - 8.13	8.13 - 15.29	15.29 - 23.86	23.86 - 100.00
Science 6	Acceptable Standard	0.00 - 60.36	60.36 - 78.51	78.51 - 86.46	86.46 - 90.64	90.64 - 100.00
	Standard of Excellence	0.00 - 11.74	11.74 - 17.42	17.42 - 25.34	25.34 - 34.31	34.31 - 100.00
English Language Arts 9	Acceptable Standard	0.00 - 63.55	63.55 - 75.66	75.66 - 83.70	83.70 - 90.27	90.27 - 100.00
	Standard of Excellence	0.00 - 5.96	5.96 - 9.43	9.43 - 14.72	14.72 - 20.46	20.46 - 100.00
French Language Arts 9	Acceptable Standard	0.00 - 67.59	67.59 - 81.33	81.33 - 92.06	92.06 - 97.26	97.26 - 100.00
	Standard of Excellence	0.00 - 1.67	1.67 - 6.81	6.81 - 17.11	17.11 - 28.68	28.68 - 100.00
Science 9	Acceptable Standard	0.00 - 50.57	50.57 - 60.14	60.14 - 72.50	72.50 - 76.89	76.89 - 100.00
	Standard of Excellence	0.00 - 3.39	3.39 - 6.71	6.71 - 11.81	11.81 - 15.85	15.85 - 100.00

**Notes:**

The range of values at each evaluation level is interpreted as greater than or equal to the lower value, and less than the higher value. For the Very High evaluation level, values range from greater than the lower value to 100%.

Too few jurisdictions offer Français (Grades 6, 9) for an Achievement Evaluation to be calculated. However, the results from Français (Grades 6, 9) are included in the aggregation of all PAT courses.

Evaluations for Mathematics (Grades 3, 6, 9) and Social Studies (Grades 6, 9) are not calculated due to the changes in the tests.

**Improvement Table**

For each jurisdiction, improvement evaluation consists of comparing the Current Year result for each measure with the previous three-year average. A chi-square statistical test is used to determine the significance of the improvement. This test takes into account the size of the jurisdiction in the calculation to make improvement evaluation fair across jurisdictions of different sizes.

The table below shows the definition of the 5 improvement evaluation levels based upon the chi-square result.

Evaluation Category	Chi-Square Range
Declined Significantly	3.84 + (current < previous 3-year average)
Declined	1.00 - 3.83 (current < previous 3-year average)
Maintained	less than 1.00
Improved	1.00 - 3.83 (current > previous 3-year average)
Improved Significantly	3.84 + (current > previous 3-year average)

**Overall Evaluation Table**

The overall evaluation combines the Achievement Evaluation and the Improvement Evaluation. The table below illustrates how the Achievement and Improvement evaluations are combined to get the overall evaluation.

	Achievement				
	Very High	High	Intermediate	Low	Very Low
Improved Significantly	Excellent	Good	Good	Good	Acceptable
Improved	Excellent	Good	Good	Acceptable	Issue
Maintained	Excellent	Good	Acceptable	Issue	Concern
Declined	Good	Acceptable	Issue	Issue	Concern
Declined Significantly	Acceptable	Issue	Issue	Concern	Concern

Performance Measure		Results (in percentages)					Target
		2006	2007	2008	2009	2010	2010
Participation rates in provincial achievement tests (PATs) for Grades 3, 6 and 9.							
English Language Arts 3	School	n/a	n/a	n/a	n/a	*	60
	Authority	94.1	92.4	96.0	96.6	96.1	
	Province	90.6	90.1	89.8	90.6	91.1	
French Language Arts 3	School	n/a	n/a	n/a	n/a	n/a	
	Authority	n/a	n/a	n/a	n/a	n/a	
	Province	n/a	n/a	n/a	96.5	97.3	
Francais 3	School	n/a	n/a	n/a	n/a	n/a	
	Authority	n/a	n/a	n/a	n/a	n/a	
	Province	n/a	n/a	n/a	97.5	97.7	
Mathematics 3	School	n/a	n/a	n/a	n/a	*	60
	Authority	95.3	92.4	96.9	96.6	94.0	
	Province	90.8	90.5	90.5	91.2	88.3	
English Language Arts 6	School	*	*	*	*	*	60
	Authority	91.8	92.8	94.7	95.3	94.7	
	Province	90.1	89.6	89.5	90.0	90.7	
French Language Arts 6	School	n/a	n/a	n/a	n/a	n/a	60
	Authority	n/a	n/a	n/a	n/a	n/a	
	Province	96.1	97.5	95.6	97.6	97.5	
Français 6	School	n/a	n/a	n/a	n/a	n/a	
	Authority	n/a	n/a	n/a	n/a	n/a	
	Province	98.0	97.6	98.5	97.7	98.4	
Mathematics 6	School	*	*	*	*	*	60
	Authority	92.2	93.8	94.7	95.6	94.7	
	Province	90.6	90.0	90.0	90.6	88.3	
Science 6	School	*	*	*	*	*	60
	Authority	90.7	91.7	90.7	95.3	95.7	
	Province	90.0	89.1	89.0	89.6	90.5	
Social Studies 6	School	n/a	n/a	n/a	n/a	*	60
	Authority	n/a	n/a	n/a	n/a	94.9	
	Province	n/a	n/a	n/a	n/a	90.3	
English Language Arts 9	School	*	*	54.5	54.5	60.0	60
	Authority	87.0	86.4	87.7	93.1	94.3	
	Province	87.7	87.9	87.7	89.7	89.8	
English Lang Arts 9 KAE	School	n/a	n/a	n/a	n/a	n/a	
	Authority	n/a	n/a	n/a	n/a	81.5	
	Province	n/a	n/a	n/a	n/a	82.2	
French Language Arts 9	School	n/a	n/a	n/a	n/a	n/a	
	Authority	n/a	n/a	n/a	n/a	n/a	
	Province	95.9	93.7	96.8	95.2	98.0	
Français 9	School	n/a	n/a	n/a	n/a	n/a	
	Authority	n/a	n/a	n/a	n/a	n/a	
	Province	98.0	96.9	97.8	98.5	97.5	
Mathematics 9	School	*	54.5	*	*	65.0	60
	Authority	85.6	87.6	88.4	95.0	93.5	
	Province	87.3	88.0	88.0	89.8	86.8	
Mathematics 9 KAE	School	n/a	n/a	n/a	n/a	n/a	

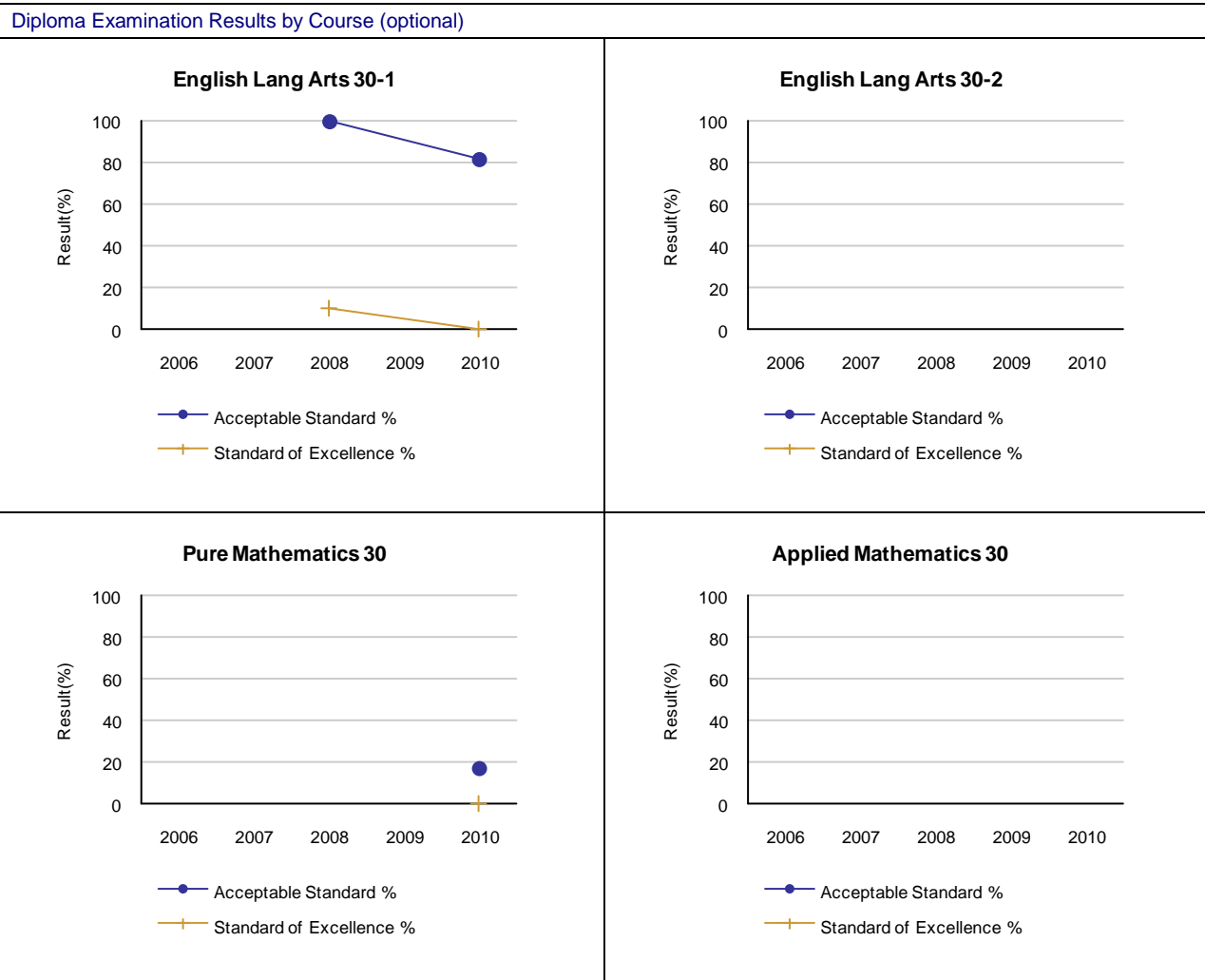
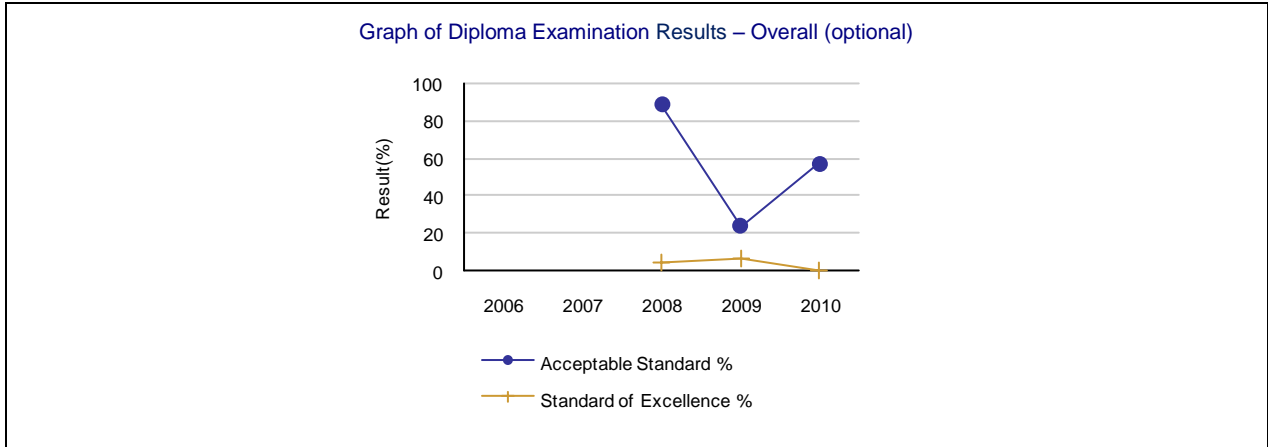
	Authority	n/a	n/a	n/a	n/a	85.7	
	Province	n/a	n/a	n/a	n/a	87.3	
Science 9	School	*	*	54.5	*	65.0	60
	Authority	89.0	87.5	89.4	94.1	94.3	
	Province	88.1	88.8	89.0	90.5	90.4	
Science 9 KAE	School	n/a	n/a	n/a	n/a	n/a	
	Authority	n/a	n/a	n/a	n/a	85.7	
	Province	n/a	n/a	n/a	n/a	86.7	
Social Studies 9	School	n/a	n/a	n/a	n/a	65.0	60
	Authority	n/a	n/a	n/a	n/a	94.7	
	Province	n/a	n/a	n/a	n/a	90.2	
Social Studies 9 KAE	School	n/a	n/a	n/a	n/a	n/a	
	Authority	n/a	n/a	n/a	n/a	92.6	
	Province	n/a	n/a	n/a	n/a	85.2	

Measure Details (OPTIONAL)											
Diploma Exam Course by Course Results by Students Writing											
		Results (in percentages)									
		2006		2007		2008		2009		2010	
		A	E	A	E	A	E	A	E	A	E
English Lang Arts 30-1	School	*	*	*	*	100.0	10.0	*	*	81.8	0.0
	Authority	86.2	18.7	83.7	16.6	85.3	13.8	82.4	9.1	78.3	7.1
	Province	88.0	19.3	87.7	19.0	87.1	15.5	86.1	12.3	85.1	10.1
English Lang Arts 30-2	School	n/a	n/a	n/a	n/a	*	*	*	*	n/a	n/a
	Authority	89.8	7.3	85.9	5.6	85.5	7.0	79.8	8.3	82.2	7.5
	Province	86.1	8.1	88.7	9.7	88.9	8.8	88.2	8.5	88.8	9.8
French Lang Arts 30-1	School	n/a	n/a	n/a	n/a	n/a	n/a	n/a	n/a	n/a	n/a
	Authority	n/a	n/a	n/a	n/a	n/a	n/a	n/a	n/a	n/a	n/a
	Province	95.0	21.8	95.6	23.1	94.9	24.5	95.1	18.9	93.7	16.3
Français 30-1	School	n/a	n/a	n/a	n/a	n/a	n/a	n/a	n/a	n/a	n/a
	Authority	n/a	n/a	n/a	n/a	n/a	n/a	n/a	n/a	n/a	n/a
	Province	94.8	28.1	97.2	24.6	98.5	25.4	94.7	33.1	94.2	15.6
Pure Mathematics 30	School	n/a	n/a	*	*	*	*	*	*	16.7	0.0
	Authority	78.2	20.1	77.3	23.4	73.9	18.6	70.7	18.8	78.2	27.3
	Province	82.8	26.5	81.1	24.6	81.3	25.8	82.1	26.3	82.9	29.7
Applied Mathematics 30	School	n/a	n/a	n/a	n/a	*	*	*	*	*	*
	Authority	80.5	12.3	77.8	12.8	77.6	11.2	72.7	9.9	80.0	11.3
	Province	77.5	11.8	77.6	12.1	76.4	10.7	79.4	13.5	77.3	12.6
Social Studies 30	School	*	*	*	*	90.9	9.1	83.3	0.0	n/a	n/a
	Authority	83.7	19.0	82.8	18.5	88.5	14.6	79.3	15.3	77.1	2.9
	Province	85.5	23.9	86.1	24.6	84.7	21.5	84.2	21.4	67.8	10.4
Social Studies 30-1	School	n/a	n/a	n/a	n/a	n/a	n/a	n/a	n/a	85.7	28.6
	Authority	n/a	n/a	n/a	n/a	n/a	n/a	n/a	n/a	81.1	12.2
	Province	n/a	n/a	n/a	n/a	n/a	n/a	n/a	n/a	84.5	16.1
Social Studies 33	School	n/a	n/a	*	*	*	*	*	*	n/a	n/a
	Authority	83.4	12.7	82.6	16.4	79.7	12.9	82.1	17.4	74.5	8.5
	Province	83.5	19.0	84.8	19.6	85.3	18.9	85.6	20.2	76.4	11.5
Social Studies 30-2	School	n/a	n/a	n/a	n/a	n/a	n/a	n/a	n/a	n/a	n/a
	Authority	n/a	n/a	n/a	n/a	n/a	n/a	n/a	n/a	78.9	8.0
	Province	n/a	n/a	n/a	n/a	n/a	n/a	n/a	n/a	85.0	13.7
Biology 30	School	*	*	n/a	n/a	*	*	0.0	0.0	50.0	0.0
	Authority	77.7	20.7	83.0	24.1	80.9	19.5	77.0	23.0	73.0	21.5
	Province	81.4	26.4	83.5	27.4	82.3	26.3	83.0	26.6	81.4	28.1
Chemistry 30 Old	School	n/a	n/a	*	*	*	*	n/a	n/a	n/a	n/a
	Authority	89.6	32.1	84.5	31.9	85.4	30.1	*	*	*	*
	Province	88.4	37.1	89.3	37.9	89.2	39.2	77.6	19.5	87.5	37.5
Chemistry 30	School	n/a	n/a	n/a	n/a	n/a	n/a	*	*	*	*
	Authority	n/a	n/a	n/a	n/a	n/a	n/a	73.3	20.4	75.5	28.3
	Province	n/a	n/a	n/a	n/a	n/a	n/a	76.3	27.7	79.0	29.9
Physics 30 Old	School	*	*	n/a	n/a	n/a	n/a	n/a	n/a	n/a	n/a
	Authority	83.6	31.1	88.5	29.1	80.8	21.6	*	*	*	*
	Province	84.4	30.0	86.1	29.3	85.7	32.0	74.4	25.6	75.0	25.0
Physics 30	School	n/a	n/a	n/a	n/a	n/a	n/a	n/a	n/a	*	*
	Authority	n/a	n/a	n/a	n/a	n/a	n/a	78.1	9.6	60.9	11.3

	Province	n/a	n/a	n/a	n/a	n/a	n/a	79.3	23.1	73.9	20.3
Science 30	School	n/a	n/a	n/a	n/a	n/a	n/a	n/a	n/a	n/a	n/a
	Authority	*	*	n/a	n/a	*	*	*	*	*	*
	Province	82.8	17.3	87.1	18.0	88.6	21.6	86.0	20.9	80.1	22.8

Note: Data values have been suppressed where the number of students is less than 6. Suppression is marked with an asterisk (\*).

\*\* "A" = Acceptable; "E" = Excellence — the percentages achieving the acceptable standard include the percentages achieving the standard of excellence.



Diploma Examination Results by Course (optional)

<p style="text-align: center;"><b>Social Studies 30</b></p> <table border="1"> <caption>Social Studies 30 Data</caption> <thead> <tr> <th>Year</th> <th>Acceptable Standard %</th> <th>Standard of Excellence %</th> </tr> </thead> <tbody> <tr> <td>2008</td> <td>90</td> <td>10</td> </tr> <tr> <td>2009</td> <td>85</td> <td>5</td> </tr> </tbody> </table>	Year	Acceptable Standard %	Standard of Excellence %	2008	90	10	2009	85	5	<p style="text-align: center;"><b>Social Studies 30-1</b></p> <table border="1"> <caption>Social Studies 30-1 Data</caption> <thead> <tr> <th>Year</th> <th>Acceptable Standard %</th> <th>Standard of Excellence %</th> </tr> </thead> <tbody> <tr> <td>2010</td> <td>85</td> <td>30</td> </tr> </tbody> </table>	Year	Acceptable Standard %	Standard of Excellence %	2010	85	30			
Year	Acceptable Standard %	Standard of Excellence %																	
2008	90	10																	
2009	85	5																	
Year	Acceptable Standard %	Standard of Excellence %																	
2010	85	30																	
<p style="text-align: center;"><b>Social Studies 33</b></p> <table border="1"> <caption>Social Studies 33 Data</caption> <thead> <tr> <th>Year</th> <th>Acceptable Standard %</th> <th>Standard of Excellence %</th> </tr> </thead> <tbody> <tr> <td>2006</td> <td>0</td> <td>0</td> </tr> <tr> <td>2007</td> <td>0</td> <td>0</td> </tr> <tr> <td>2008</td> <td>0</td> <td>0</td> </tr> <tr> <td>2009</td> <td>0</td> <td>0</td> </tr> <tr> <td>2010</td> <td>0</td> <td>0</td> </tr> </tbody> </table>	Year	Acceptable Standard %	Standard of Excellence %	2006	0	0	2007	0	0	2008	0	0	2009	0	0	2010	0	0	<p style="text-align: center;">[No Data for Social Studies 30-2]</p>
Year	Acceptable Standard %	Standard of Excellence %																	
2006	0	0																	
2007	0	0																	
2008	0	0																	
2009	0	0																	
2010	0	0																	
<p style="text-align: center;"><b>Biology 30</b></p> <table border="1"> <caption>Biology 30 Data</caption> <thead> <tr> <th>Year</th> <th>Acceptable Standard %</th> <th>Standard of Excellence %</th> </tr> </thead> <tbody> <tr> <td>2009</td> <td>0</td> <td>0</td> </tr> <tr> <td>2010</td> <td>50</td> <td>0</td> </tr> </tbody> </table>	Year	Acceptable Standard %	Standard of Excellence %	2009	0	0	2010	50	0	<p style="text-align: center;">[No Data for Chemistry 30 Old]</p>									
Year	Acceptable Standard %	Standard of Excellence %																	
2009	0	0																	
2010	50	0																	

Note: Data values have been suppressed where the number of students is less than 6. Suppression is marked with an asterisk (\*).

Diploma Examination Results by Course (optional)

<p style="text-align: center;"><b>Chemistry 30</b></p> <p>Result (%)</p> <p>2006 2007 2008 2009 2010</p> <p>Acceptable Standard % Standard of Excellence %</p>	<p>[No Data for Physics 30 Old]</p>
<p style="text-align: center;"><b>Physics 30</b></p> <p>Result (%)</p> <p>2006 2007 2008 2009 2010</p> <p>Acceptable Standard % Standard of Excellence %</p>	<p>[No Data for Science 30]</p>

Note: Data values have been suppressed where the number of students is less than 6. Suppression is marked with an asterisk (\*).

Diploma Exam Results Course By Course Summary With Measure Evaluation (optional)

		Northstar Academy - Canada							Alberta			
Course	Measure	Achievement	Improvement	Overall	2010		Prev 3 Yr Avg		2010		Prev 3 Yr Avg	
					N	%	N	%	N	%	N	%
English Lang Arts 30-1	Acceptable Standard	Very Low	Declined	Concern	11	81.8	10	100.0	29,151	85.1	28,157	87.0
	Standard of Excellence	Very Low	Declined	Concern	11	0.0	10	10.0	29,151	10.1	28,157	15.6
English Lang Arts 30-2	Acceptable Standard	n/a	n/a	n/a	n/a	n/a	n/a	n/a	14,314	88.8	13,150	88.6
	Standard of Excellence	n/a	n/a	n/a	n/a	n/a	n/a	n/a	14,314	9.8	13,150	9.0
French Lang Arts 30-1	Acceptable Standard	n/a	n/a	n/a	n/a	n/a	n/a	n/a	1,324	93.7	1,224	95.2
	Standard of Excellence	n/a	n/a	n/a	n/a	n/a	n/a	n/a	1,324	16.3	1,224	22.1
Français 30-1	Acceptable Standard	n/a	n/a	n/a	n/a	n/a	n/a	n/a	154	94.2	135	96.8
	Standard of Excellence	n/a	n/a	n/a	n/a	n/a	n/a	n/a	154	15.6	135	27.7
Pure Mathematics 30	Acceptable Standard	Very Low	n/a	n/a	6	16.7	n/a	n/a	22,917	82.9	22,411	81.5
	Standard of Excellence	Very Low	n/a	n/a	6	0.0	n/a	n/a	22,917	29.7	22,411	25.6
Applied Mathematics 30	Acceptable Standard	*	*	*	1	*	n/a	n/a	10,639	77.3	10,191	77.8
	Standard of Excellence	*	*	*	1	*	n/a	n/a	10,639	12.6	10,191	12.1
Biology 30	Acceptable Standard	Very Low	Improved Significantly	Acceptable	10	50.0	6	0.0	22,345	81.4	20,946	82.9
	Standard of Excellence	Very Low	Maintained	Concern	10	0.0	6	0.0	22,345	28.1	20,946	26.8
Chemistry 30	Acceptable Standard	*	*	*	4	*	n/a	n/a	18,933	79.0	17,370	76.3
	Standard of Excellence	*	*	*	4	*	n/a	n/a	18,933	29.9	17,370	27.7
Physics 30	Acceptable Standard	*	*	*	2	*	n/a	n/a	10,360	73.9	10,072	79.3
	Standard of Excellence	*	*	*	2	*	n/a	n/a	10,360	20.3	10,072	23.1
Science 30	Acceptable Standard	n/a	n/a	n/a	n/a	n/a	n/a	n/a	4,941	80.1	4,004	87.3
	Standard of Excellence	n/a	n/a	n/a	n/a	n/a	n/a	n/a	4,941	22.8	4,004	20.2

Note: Data values have been suppressed where the number of students is less than 6. Suppression is marked with an asterisk (\*).

Too few jurisdictions offer Français 30-1 for an Achievement Evaluation to be calculated. However, the results from Français 30-1 are included in the aggregation of all Diploma courses.

Achievement Evaluations for Physics 30 and Chemistry 30 are not calculated due to the changes in the examinations in 2009. Evaluations for Social Studies (30, 33, 30-1, 30-2) are not calculated due to the changes in the examinations in 2010.

**Measure Evaluation Reference - Achievement Evaluation**

Achievement evaluation is based upon a comparison of Current Year data to a set of standards which remain consistent over time. The Standards are calculated by taking the 3 year average of baseline data for each measure across all school jurisdictions and calculating the 5th, 25th, 75th, and 95th percentiles. Once calculated, these standards remain in place from year to year to allow for consistent planning and evaluation.

The table below shows the range of values defining the 5 achievement evaluation levels for each measure.

Course	Measure	Very Low	Low	Intermediate	High	Very High
English Lang Arts 30-1	Acceptable Standard	0.00 - 83.76	83.76 - 92.02	92.02 - 95.13	95.13 - 100.00	100.00 - 100.00
	Standard of Excellence	0.00 - 6.22	6.22 - 13.46	13.46 - 20.88	20.88 - 27.39	27.39 - 100.00
English Lang Arts 30-2	Acceptable Standard	0.00 - 70.83	70.83 - 82.43	82.43 - 90.72	90.72 - 96.00	96.00 - 100.00
	Standard of Excellence	0.00 - 0.00	0.00 - 3.13	3.13 - 8.65	8.65 - 11.61	11.61 - 100.00
French Lang Arts 30-1	Acceptable Standard	0.00 - 77.27	77.27 - 93.33	93.33 - 100.00	100.00 - 100.00	100.00 - 100.00
	Standard of Excellence	0.00 - 0.00	0.00 - 5.49	5.49 - 19.84	19.84 - 28.00	28.00 - 100.00
Pure Mathematics 30	Acceptable Standard	0.00 - 54.07	54.07 - 76.74	76.74 - 86.06	86.06 - 92.18	92.18 - 100.00
	Standard of Excellence	0.00 - 6.15	6.15 - 18.46	18.46 - 29.38	29.38 - 34.62	34.62 - 100.00
Applied Mathematics 30	Acceptable Standard	0.00 - 73.06	73.06 - 80.94	80.94 - 90.03	90.03 - 91.69	91.69 - 100.00
	Standard of Excellence	0.00 - 4.57	4.57 - 10.29	10.29 - 16.08	16.08 - 23.77	23.77 - 100.00
Biology 30	Acceptable Standard	0.00 - 67.51	67.51 - 78.03	78.03 - 85.82	85.82 - 89.41	89.41 - 100.00
	Standard of Excellence	0.00 - 12.33	12.33 - 19.00	19.00 - 25.60	25.60 - 30.05	30.05 - 100.00
Science 30	Acceptable Standard	0.00 - 76.11	76.11 - 83.33	83.33 - 91.76	91.76 - 97.14	97.14 - 100.00
	Standard of Excellence	0.00 - 6.98	6.98 - 11.36	11.36 - 21.80	21.80 - 36.81	36.81 - 100.00

**Notes:**

The range of values at each evaluation level is interpreted as greater than or equal to the lower value, and less than the higher value. For the Very High category, values range from greater than the lower value to 100%.

Too few jurisdictions offer Français 30-1 for an Achievement Evaluation to be calculated. However, the results from Français 30-1 are included in the aggregation of all Diploma courses.

Achievement Evaluations for Physics 30 and Chemistry 30 are not calculated due to the changes in the examinations in 2009. Evaluations for Social Studies (30, 33, 30-1, 30-2) are not calculated due to the changes in the examinations in 2010.

**Improvement Table**

For each jurisdiction, improvement evaluation consists of comparing the Current Year result for each measure with the previous three-year average. A chi-square statistical test is used to determine the significance of the improvement. This test takes into account the size of the jurisdiction in the calculation to make improvement evaluation fair across jurisdictions of different sizes.

The table below shows the definition of the 5 improvement evaluation levels based upon the chi-square result.

Evaluation Category	Chi-Square Range
Declined Significantly	3.84 + (current < previous 3-year average)
Declined	1.00 - 3.83 (current < previous 3-year average)
Maintained	less than 1.00
Improved	1.00 - 3.83 (current > previous 3-year average)
Improved Significantly	3.84 + (current > previous 3-year average)

**Overall Evaluation Table**

The overall evaluation combines the Achievement Evaluation and the Improvement Evaluation. The table below illustrates how the Achievement and Improvement evaluations are combined to get the overall evaluation.

	Achievement				
	Very High	High	Intermediate	Low	Very Low
Improved Significantly	Excellent	Good	Good	Good	Acceptable
Improved	Excellent	Good	Good	Acceptable	Issue
Maintained	Excellent	Good	Acceptable	Issue	Concern
Declined	Good	Acceptable	Issue	Issue	Concern
Declined Significantly	Acceptable	Issue	Issue	Concern	Concern

Outcome: Students are well prepared for lifelong learning.

Performance Measures	2005	2006	2007	2008	2009	Target	Evaluation			Targets		
						2010	Achievement	Improvement	Overall	2011	2012	2013
High school to post-secondary transition rate within six years of entering Grade 10.	n/a	n/a	n/a	n/a	*		*	*	*			

**Comment on Results (**

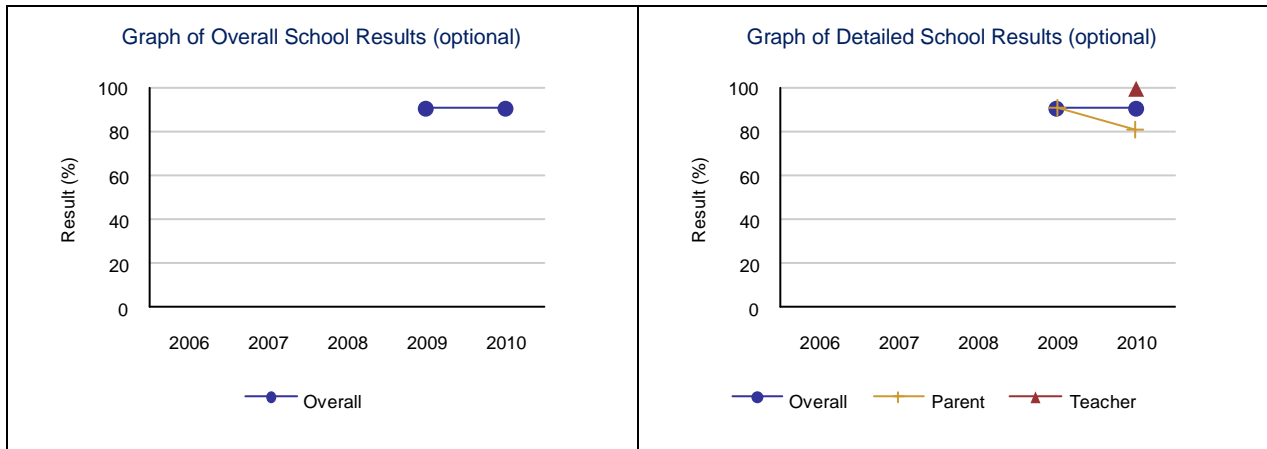
Small numbers mean results are suppressed.

- Strategies**
- a. Promote RAP
  - b. Enhance accessibility of learning programs for all students.
  - c. Provide in-service for teachers regarding Alberta Education Curriculum requirements and best practice in teaching
  - d. Continue to improve lessons by comparing results of Diploma and PAT results with lessons outcomes

Outcome: Students are well prepared for employment.

Performance Measure	Results (in percentages)					Target	Evaluation			Targets		
	2006	2007	2008	2009	2010	2010	Achievement	Improvement	Overall	2011	2012	2013
Percentages of teachers and parents who agree that students are taught attitudes and behaviours that will make them successful at work when they finish school.	n/a	n/a	n/a	90.9	90.6	90	Very High	Maintained	Excellent	90	90	90

- Strategies**
- a. Promote RAP
  - b. Enhance accessibility of learning programs for all students.
  - c. Provide in-service for teachers regarding Alberta Education Curriculum requirements and best practice in teaching
  - d. Continue to improve lessons by comparing results of Diploma and PAT results with lessons outcomes



Outcome: Students model the characteristics of active citizenship.

Performance Measure	Results (in percentages)					Target	Evaluation			Targets		
	2006	2007	2008	2009	2010	2010	Achievement	Improvement	Overall	2011	2012	2013
Percentages of teachers, parents and students who are satisfied that students model the characteristics of active citizenship.	n/a	n/a	n/a	90.9	87.5	90	Very High	Maintained	Excellent	90	90	90

- Strategies**
- Promote RAP
  - Enhance accessibility of learning programs for all students.
  - Provide in-service for teachers regarding Alberta Education Curriculum requirements and best practice in teaching
  - Continue to improve lessons by comparing results of Diploma and PAT results with lessons outcomes

Measure Details															
Percentages of teachers, parents and students who are satisfied that students model the characteristics of active citizenship.															
	School					Authority					Province				
	2006	2007	2008	2009	2010	2006	2007	2008	2009	2010	2006	2007	2008	2009	2010
Overall	n/a	n/a	n/a	90.9	87.5	76.5	74.0	77.2	77.7	79.4	76.8	76.6	77.9	80.3	81.4
Teacher	n/a	n/a	n/a	n/a	88.9	92.7	88.3	92.0	93.1	92.7	90.3	89.9	90.6	91.8	93.0
Parent	n/a	n/a	*	90.9	92.8	71.7	69.7	74.0	73.7	74.8	72.4	72.6	74.7	77.4	78.5
Student	n/a	n/a	n/a	n/a	80.8	65.1	64.0	65.6	66.3	70.7	67.5	67.1	68.5	71.8	72.7

Note: Data values have been suppressed where the number of respondents is less than 6. Suppression is marked with an asterisk (\*).

Also report targets and results for all local school/authority measures related to Goal 2 (minimum one year of results – authorities are encouraged to provide multi-year results for trend analysis).

### Goal Four: Highly Responsive and Responsible Jurisdiction

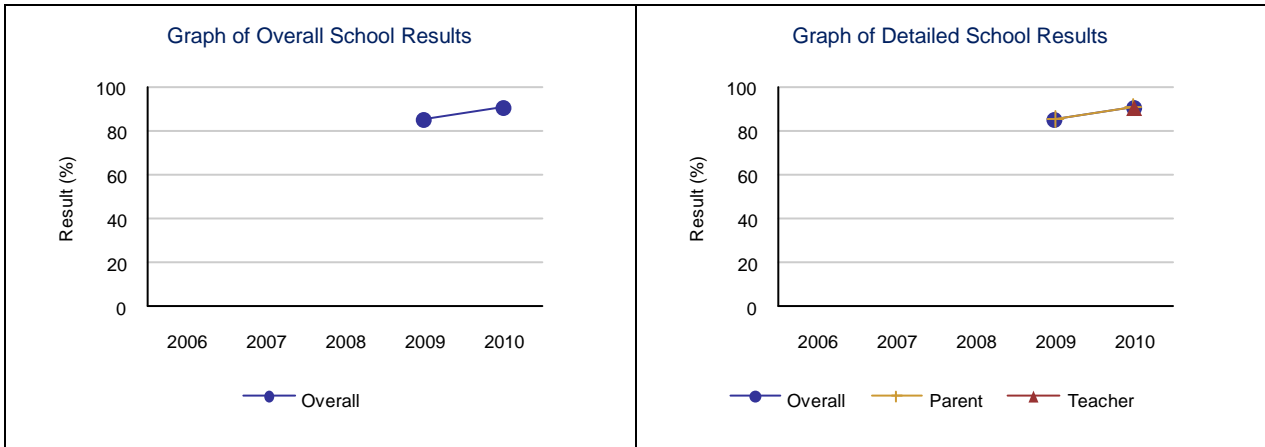
Outcome: The jurisdiction demonstrates effective working relationships.

Performance Measure	Results (in percentages)					Target	Evaluation			Targets		
	2006	2007	2008	2009	2010	2010	Achievement	Improvement	Overall	2011	2012	2013
Percentage of teachers and parents satisfied with parental involvement in decisions about their child's education.	n/a	n/a	n/a	85.5	90.7		Very High	Maintained	Excellent			

**Strategies**

- (a) Increased PD
- (b) Have annual teachers PD retreat
- (c) Regular Curriculum updates newsletter sent to staff
- (d) Meet with parents to set up students schedules

Measure Details (OPTIONAL)															
Percentage of teachers and parents satisfied with parental involvement in decisions about their child's education.															
	School					Authority					Province				
	2006	2007	2008	2009	2010	2006	2007	2008	2009	2010	2006	2007	2008	2009	2010
Overall	n/a	n/a	n/a	85.5	90.7	77.2	75.6	78.3	79.4	77.2	77.9	77.5	78.2	80.1	80.0
Teacher	n/a	n/a	n/a	n/a	90.9	88.5	88.0	90.4	90.5	88.4	87.6	87.1	87.5	88.0	88.6
Parent	n/a	n/a	*	85.5	90.6	65.9	63.1	66.2	68.2	66.1	68.1	67.9	69.0	72.2	71.3



Outcome: The jurisdiction demonstrates leadership, innovation and continuous improvement.

Performance Measure	Results (in percentages)					Target	Evaluation			Targets		
	2006	2007	2008	2009	2010	2010	Achievement	Improvement	Overall	2011	2012	2013
Percentages of teachers, parents and students indicating that their school and schools in their jurisdiction have improved or stayed the same the last three years.	n/a	n/a	n/a	81.8	89.0	90	Very High	Maintained	Excellent	90	90	90

**Strategies**

- (a) Increased PD
- (b) Have annual teachers PD retreat
- (c) Regular Curriculum updates newsletter sent to staff
- (d) Meet with parents to set up students schedules

**FUTURE CHALLENGES**

Marketing continues to be a challenge. It seems there are many markets for NorthStar but we need to get people into these markets so that we can promote and grow the school. We have increased our presence at Christian School conferences, Home School conferences and International Christian school conferences. To continue to grow, we will need to continue to promote NorthStar in these areas.

NorthStar will continue to promote the school wherever there is a market and will add three levels of English as another Language classes to encourage more international students. We will also continue to develop our partnerships with schools, mission organizations and home school families.

Diploma exams are a concern from the previous year in a few subject areas.

**FINANCIAL REPORT**

