

COMBINED
ANNUAL EDUCATION RESULTS REPORT
2011/2012



NorthStar
ACADEMY
Any Time. Any Place.



**Box 1405
Didsbury, Alberta
T0M 0W0
(403) 335-9587 (phone)
(403) 335-9513 (fax)**

Accountability Statement

The annual education results report for Golden Hills School Division #75 for the 2010/2011 school year was prepared under the direction of the board in accordance with the responsibilities under the School Act and the Government Accountability Act. The board is committed to using the results in this report, to the best of our abilities, to improve the outcomes for students in our jurisdiction. We will use the results to develop sound strategies for our three-year education plan to ensure that all our students can acquire the knowledge, skills and attitudes they need to be self-reliant, responsible, caring and contributing members of society.

Communicating the Annual Results Report

NSA communicates its major accomplishments and results of the past year to parents and the school community by:

- Including highlights of the 3 year–plan and AERR in the school’s news area.
- Making the 3 year–plan and AERR accessible to parents and the school community through the administration office.
- Highlighting parts of the 3 year–plan and AERR in newsletters

NorthStar Academy is an education from home specialist!

With four choices to help support Christian Education, NorthStar Academy Canada is meeting the individual needs of its students.

NorthStar Academy Canada offers an online program, a home schooling program and an individualized program that is specific to each student.

Online

Our Alberta, accredited education for grades 5 to 12 provides students with the highest quality online education possible. NorthStar Academy Canada has a history of excellence Evangelical Christian Education and has developed our online school to be effective and easy to use while ensuring a dynamic and interesting learning environment for our students around the world.

Independent

If families are looking for detailed lesson plans, full daily and weekly lessons, and other teaching resources to help support home schooling, NorthStar's online lessons are available as a solid resource. Detailed online lessons help families enjoy the independence of working at their own pace and from their own place.

Traditional Home Schooling

NorthStar Academy Canada is an education from home specialist and we encourage and support families who desire to meet the individual needs and abilities of their children through home schooling.

Individualized Program

God has given each child unique gifts and with NorthStar's Individualized Program, students learn with education that is tailored to their interests, abilities and needs.

Vision Statement

NorthStar Academy Canada envisions a world in which Christian Education is accessed easily from anywhere by anyone.

Mission

To empower missionary families, home school families and Christian schools by providing dynamic Christian educational choices which recognizes individual's needs, abilities and goals.

Highlight of 2010-2011

We are focusing on assessment for learning

We focused on English as a second language, providing five levels of classes.

Activity days were implemented to provide face-to-face learning opportunities

Illuminate Live was purchased to help with face-to-face learning opportunities

Live graduation ceremony was re-implemented

Two Missionfests were attended

Over 95% of our graduates were eligible for the Rutherford Scholarship

SUMMARY OF ACCOMPLISHMENTS

Many students did not write the grade six and nine achievement tests. As the majority of our families are overseas, they are not able to write. Provincial Achievement tests can only be written by students located in Alberta.

October 2011 Accountability Pillar Overall Summary

Measure Category	Measure Category Evaluation	Measure	Northstar Academy - Canada			Alberta			Measure Evaluation		
			Current Result	Prev Year Result	Prev 3 yr Average	Current Result	Prev Year Result	Prev 3 Yr Average	Achievement	Improvement	Overall
Safe and Caring Schools	Excellent	Safe and Caring	95.3	89.6	90.2	88.1	87.6	86.6	Very High	Maintained	Excellent
Student Learning Opportunities	n/a	Program of Studies	76.9	57.5	60.1	80.9	80.5	80.1	Intermediate	Improved	Good
		Education Quality	98.5	91.4	90.4	89.4	89.2	88.9	Very High	Improved	Excellent
		Drop Out Rate	4.7	10.3	9.6	4.2	4.3	4.7	Intermediate	Improved	Good
		High School Completion Rate (3 yr)	32.6	*	n/a	72.6	71.5	71.1	Very Low	n/a	n/a
Student Learning Achievement (Grades K-9)	Concern	PAT: Acceptable	13.8	40.4	34.2	79.3	79.1	78.0	Very Low	Declined	Concern
		PAT: Excellence	0.0	5.8	3.8	19.6	19.4	18.5	Very Low	Maintained	Concern
Student Learning Achievement (Grades 10-12)	n/a	Diploma: Acceptable	81.8	57.1	56.4	82.6	83.4	84.0	Low	Improved	Acceptable
		Diploma: Excellence	3.0	0.0	3.2	18.7	19.0	18.9	Very Low	Maintained	Concern
		Diploma Exam Participation Rate (4+ Exams)	32.6	*	n/a	54.9	53.5	53.5	Low	n/a	n/a
		Rutherford Scholarship Eligibility Rate (Revised)	95.2	58.3	55.9	59.6	56.9	57.0	Very High	Improved Significantly	Excellent
Preparation for Lifelong Learning, World of Work, Citizenship	n/a	Transition Rate (6 yr)	n/a	*	n/a	59.3	59.8	59.3	n/a	n/a	n/a
		Work Preparation	100.0	90.6	90.8	80.1	79.9	79.8	Very High	Improved	Excellent
		Citizenship	91.0	87.5	89.2	81.9	81.4	79.9	Very High	Maintained	Excellent
Parental Involvement	Excellent	Parental Involvement	93.9	90.7	88.1	79.9	80.0	79.4	Very High	Maintained	Excellent
Continuous Improvement	Excellent	School Improvement	95.6	89.0	85.4	80.1	79.9	78.8	Very High	Improved	Excellent

Notes:

1. PAT results are a weighted average of the percent meeting standards (Acceptable, Excellence) on Provincial Achievement Tests. The weights are the number of students enrolled in each course. Courses included: English Language Arts (Grades 3, 6, 9), Science (Grades 6, 9), French Language Arts (Grades 6, 9), Français (Grades 6, 9).
2. Diploma results are a weighted average of percent meeting standards (Acceptable, Excellence) on Diploma Examinations. The weights are the number of students writing the Diploma Examination for each course. Courses included: English Language Arts 30-1, English Language Arts 30-2, French Language Arts 30-1, Français 30-1, Pure Mathematics 30, Applied Mathematics 30, Biology 30, Science 30.
3. Overall evaluations can only be calculated if both improvement and achievement evaluations are available.
4. The subsequent pages include evaluations for each performance measure. If jurisdictions desire not to present this information for each performance measure in the subsequent pages, please include a reference to this overall summary page for each performance measure.
5. Data values have been suppressed where the number of students is less than 6. Suppression is marked with an asterisk (*).

Measure Evaluation Reference

Achievement Evaluation

Achievement evaluation is based upon a comparison of Current Year data to a set of standards which remain consistent over time. The Standards are calculated by taking the 3 year average of baseline data for each measure across all school jurisdictions and calculating the 5th, 25th, 75th and 95th percentiles. Once calculated, these standards remain in place from year to year to allow for consistent planning and evaluation.

The table below shows the range of values defining the 5 achievement evaluation levels for each measure.

Measure	Very Low	Low	Intermediate	High	Very High
Safe and Caring	0.00 - 77.62	77.62 - 81.05	81.05 - 84.50	84.50 - 88.03	88.03 - 100.00
Program of Studies	0.00 - 66.31	66.31 - 72.65	72.65 - 78.43	78.43 - 81.59	81.59 - 100.00
Education Quality	0.00 - 80.94	80.94 - 84.23	84.23 - 87.23	87.23 - 89.60	89.60 - 100.00
Drop Out Rate	100.00 - 9.40	9.40 - 6.90	6.90 - 4.27	4.27 - 2.79	2.79 - 0.00
High School Completion Rate (3 yr)	0.00 - 57.03	57.03 - 62.36	62.36 - 73.88	73.88 - 81.79	81.79 - 100.00
PAT: Acceptable	0.00 - 65.53	65.53 - 78.44	78.44 - 85.13	85.13 - 89.49	89.49 - 100.00
PAT: Excellence	0.00 - 9.19	9.19 - 11.96	11.96 - 17.99	17.99 - 22.45	22.45 - 100.00
Diploma: Acceptable	0.00 - 74.42	74.42 - 83.58	83.58 - 88.03	88.03 - 92.35	92.35 - 100.00
Diploma: Excellence	0.00 - 10.31	10.31 - 15.67	15.67 - 20.27	20.27 - 23.77	23.77 - 100.00
Diploma Exam Participation Rate (4+ Exams)	0.00 - 31.10	31.10 - 44.11	44.11 - 55.78	55.78 - 65.99	65.99 - 100.00
Rutherford Scholarship Eligibility Rate (Revised)	0.00 - 43.18	43.18 - 49.83	49.83 - 59.41	59.41 - 70.55	70.55 - 100.00
Transition Rate (6 yr)	0.00 - 39.80	39.80 - 46.94	46.94 - 56.15	56.15 - 68.34	68.34 - 100.00
Work Preparation	0.00 - 66.92	66.92 - 72.78	72.78 - 77.78	77.78 - 86.13	86.13 - 100.00
Citizenship	0.00 - 66.30	66.30 - 71.63	71.63 - 77.50	77.50 - 81.08	81.08 - 100.00
Parental Involvement	0.00 - 70.76	70.76 - 74.58	74.58 - 78.50	78.50 - 82.30	82.30 - 100.00
School Improvement	0.00 - 65.25	65.25 - 70.85	70.85 - 76.28	76.28 - 80.41	80.41 - 100.00

Notes:

- 1) For all measures except Drop Out Rate: The range of values at each evaluation level is interpreted as greater than or equal to the lower value, and less than the higher value. For the Very High evaluation level, values range from greater than or equal to the lower value to 100%.
- 2) Drop Out Rate measure: As "Drop-out Rate" is inverse to most measures (i.e. lower values are "better"), the range of values at each evaluation level is interpreted as greater than the lower value and less than or equal to the higher value. For the Very High evaluation level, values range from 0% to less than or equal to the higher value.

Improvement Table

For each jurisdiction, improvement evaluation consists of comparing the Current Year result for each measure with the previous three-year average. A chi-square statistical test is used to determine the significance of the improvement. This test takes into account the size of the jurisdiction in the calculation to make improvement evaluation fair across jurisdictions of different sizes.

The table below shows the definition of the 5 improvement evaluation levels based upon the chi-square result.

Evaluation Category	Chi-Square Range
Declined Significantly	3.84 + (current < previous 3-year average)
Declined	1.00 - 3.83 (current < previous 3-year average)
Maintained	less than 1.00
Improved	1.00 - 3.83 (current > previous 3-year average)
Improved Significantly	3.84 + (current > previous 3-year average)

Overall Evaluation Table

The overall evaluation combines the Achievement Evaluation and the Improvement Evaluation. The table below illustrates how the Achievement and Improvement evaluations are combined to get the overall evaluation.

Improvement	Achievement				
	Very High	High	Intermediate	Low	Very Low
Improved Significantly	Excellent	Good	Good	Good	Acceptable
Improved	Excellent	Good	Good	Acceptable	Issue
Maintained	Excellent	Good	Acceptable	Issue	Concern
Declined	Good	Acceptable	Issue	Issue	Concern
Declined Significantly	Acceptable	Issue	Issue	Concern	Concern

Category Evaluation

The category evaluation is an average of the Overall Evaluation of the measures that make up the category. For the purpose of the calculation, consider an Overall Evaluation of Excellent to be 2, Good to be 1, Acceptable to be 0, Issue to be -1, and Concern to be -2. The simple average (mean) of these values rounded to the nearest integer produces the Category Evaluation value. This is converted back to a colour using the same scale above (e.g. 2=Excellent, 1=Good, 0=Intermediate, -1=Issue, -2=Concern)

Goal One: Success for Every Student

Outcome: Students demonstrate proficiency in literacy and numeracy

Performance Measure	Results (in percentages)					Target ¹	Evaluation		
	2007	2008	2009	2010	2011	2011	Achievement	Improvement	Overall
Overall percentage of students in Grades 3, 6 and 9 who achieved the acceptable standard on Provincial Achievement Tests (overall cohort results).	26.5	28.9	33.3	40.4	13.8		Very Low	Declined	Concern
Overall percentage of students in Grades 3, 6 and 9 who achieved the standard of excellence on Provincial Achievement Tests (overall cohort results).	2.9	0.0	5.6	5.8	0.0		Very Low	Maintained	Concern

Comment on Results

As the majority of our students do not write PAT as they are out of Alberta or because it is the parents' choice, this result is skewed. What this result really shows is that NSA respects the parents right to opt out of the PAT if they choose and that NSA had an overseas population of students. These are two factors that we are proud of.

Strategies

- a. Provide in-service for teachers regarding Alberta Education Curriculum requirements and best practice in teaching
- b. Continue to improve lessons by comparing results of Diploma and PAT results with lessons outcomes

Outcome: *Students achieve educational outcomes*

Performance Measure	Results (in percentages)					Target 2011	Evaluation			Targets		
	2007	2008	2009	2010	2011		Achievement	Improvement	Overall	2012	2013	2014
Overall percentage of students who achieved the acceptable standard on diploma examinations (overall results).	*	88.5	23.5	57.1	81.8		Low	Improved	Acceptable			
Overall percentage of students who achieved the standard of excellence on diploma examinations (overall results).	*	3.8	5.9	0.0	3.0		Very Low	Maintained	Concern			

Performance Measure	Results (in percentages)					Target 2011	Evaluation			Targets		
	2006	2007	2008	2009	2010		Achievement	Improvement	Overall	2012	2013	2014
High School Completion Rate - percentages of students who completed high school within three years of entering Grade 10.	*	n/a	*	*	32.6		Very Low	n/a	n/a			
Drop Out Rate - annual dropout rate of students aged 14 to 18	11.2	*	8.8	10.3	4.7		Intermediate	Improved	Good			
High school to post-secondary transition rate of students within six years of entering Grade 10.	n/a	n/a	n/a	*	n/a		n/a	n/a	n/a			
Percentage of Grade 12 students eligible for a Rutherford Scholarship.	n/a	53.8	55.6	58.3	95.2		Very High	Improved Significantly	Excellent			
Percentage of students writing four or more diploma exams within three years of entering Grade 10.	*	n/a	*	*	32.6		Low	n/a	n/a			

Comment on Results

As we have a population of students who are transient, it is difficult to determine if and where they have completed high school. These results placed many of those who moved as an incomplete.

Strategies

- a. Enhance accessibility of learning programs for all students.
- b. Provide in-service for teachers regarding Alberta Education Curriculum requirements and best practice in teaching
- c. Continue to improve lessons by comparing results of Diploma and PAT results with lessons outcomes

Outcome: *Students are prepared for the 21st century*

Note – This outcome combines the following outcomes from the 2010/11 – 2012/13 three year education plan:

- *Students model the characteristics of active citizenship*
- *Students are well prepared for employment*

Performance Measure	Results (in percentages)					Target	Evaluation			Targets		
	2007	2008	2009	2010	2011	2011	Achievement	Improvement	Overall	2012	2013	2014
Percentages of teachers, parents and students who are satisfied that students model the characteristics of active citizenship.	n/a	n/a	90.9	87.5	91.0		Very High	Maintained	Excellent			
Percentages of teachers and parents who agree that students are taught attitudes and behaviours that will make them successful at work when they finish school.	n/a	n/a	90.9	90.6	100.0		Very High	Improved	Excellent			

<p>Comment on Results</p> <p>We are proud of these results. As a Christian School we desire our students to be a light in the world whether the student is to continue to post-secondary school or employment.</p>
<p>Strategies</p> <ol style="list-style-type: none"> a. Model positive attitudes and behaviors b. Continue to encourage students to work with mission groups and volunteer in their community

Goal Two: Transformed Education Through Collaboration

Outcome: Students have access to programming and supports to enable their learning

Performance Measure	Results (in percentages)					Target	Evaluation			Targets		
	2007	2008	2009	2010	2011		2011	Achievement	Improvement	Overall	2012	2013
Percentage of teachers, parents and students satisfied with the opportunity for students to receive a broad program of studies including fine arts, career, technology, and health and physical education.	n/a	n/a	62.7	57.5	76.9		Intermediate	Improved	Good			
Percentage of teachers, parents and students satisfied with the overall quality of basic education.	n/a	n/a	89.4	91.4	98.5		Very High	Improved	Excellent			
Percentage of teacher, parent and student agreement that: students are safe at school, are learning the importance of caring for others, are learning respect for others and are treated fairly in school.	n/a	n/a	90.7	89.6	95.3		Very High	Maintained	Excellent			

Comment on Results

We are adding more optional classes and classes at various levels to better meet the needs of all learners.

Strategies

- a. Develop more option classes
- b. Enhance accessibility of learning programs for all students.
- c. Continue Activity days to bring students and families together.
- d. Provide face to face instruction of some option classes

Outcome: *The education system demonstrates openness to new and innovative ideas, leadership and collaboration*

Note – This outcome combines the following outcomes from the 2010/11 – 2012/13 three year education plan:

- *The jurisdiction demonstrates effective working relationships*
- *The jurisdiction demonstrates leadership, innovation and continuous improvement*

Performance Measure	Results (in percentages)					Target	Evaluation			Targets		
	2007	2008	2009	2010	2011	2011	Achievement	Improvement	Overall	2012	2013	2014
Percentage of teachers and parents satisfied with parental involvement in decisions about their child's education.	n/a	n/a	85.5	90.7	93.9		Very High	Maintained	Excellent			
Percentages of teachers, parents and students indicating that their school and schools in their jurisdiction have improved or stayed the same the last three years.	n/a	n/a	81.8	89.0	95.6		Very High	Improved	Excellent			

Comment on Results

We recognize that staying the same is not an option. We must continue to grow as a school and desire parental input in doing so.

Strategies

- a. Phone every family at least twice a year to check in
- b. Provide opportunity for discussion at activity days
- c. Have face to face classes where we can work with families

APPENDIX – Measure Details

The following pages include tables and graphs that provide detailed data for the performance measures.

Provincial Achievement Test Results – Measure Details

PAT Course by Course Results by Number Enrolled.											
		Results (in percentages)									
		2007		2008		2009		2010		2011	
		A	E	A	E	A	E	A	E	A	E
English Language Arts 3	School	n/a	n/a	n/a	n/a	n/a	n/a	*	*	*	*
	Authority	82.3	18.2	87.0	14.9	84.4	18.2	83.9	16.1	87.8	15.7
	Province	80.3	17.7	80.1	16.1	81.3	18.2	81.6	19.5	81.8	17.5
Mathematics 3	School	n/a	n/a	n/a	n/a	n/a	n/a	n/a	n/a	*	*
	Authority	n/a	n/a	n/a	n/a	n/a	n/a	n/a	n/a	82.7	23.2
	Province	n/a	n/a	n/a	n/a	n/a	n/a	n/a	n/a	77.4	26.0
English Language Arts 6	School	*	*	*	*	*	*	*	*	*	*
	Authority	78.7	15.1	82.7	18.9	83.3	16.7	87.4	19.1	86.6	17.1
	Province	80.3	19.8	81.1	21.0	81.8	18.9	83.3	18.9	83.0	18.5
	Province	93.0	18.0	94.3	17.1	92.6	18.7	91.3	18.3	92.2	17.6
Mathematics 6	School	n/a	n/a	n/a	n/a	n/a	n/a	n/a	n/a	*	*
	Authority	n/a	n/a	n/a	n/a	n/a	n/a	n/a	n/a	76.8	14.3
	Province	n/a	n/a	n/a	n/a	n/a	n/a	n/a	n/a	73.7	17.8
Science 6	School	*	*	*	*	*	*	*	*	*	*
	Authority	69.1	23.7	72.4	18.7	78.6	20.0	76.4	21.6	78.1	18.6
	Province	75.2	26.6	74.8	24.1	76.5	24.8	76.8	26.4	76.2	25.0
Social Studies 6	School	n/a	n/a	n/a	n/a	n/a	n/a	*	*	*	*
	Authority	n/a	n/a	n/a	n/a	n/a	n/a	65.5	10.9	67.1	12.9
	Province	n/a	n/a	n/a	n/a	n/a	n/a	71.0	16.4	71.1	18.5
English Language Arts 9	School	*	*	45.5	0.0	54.5	0.0	55.0	10.0	*	*
	Authority	71.4	11.9	73.9	10.7	79.7	14.1	79.2	8.9	79.2	12.4
	Province	77.5	14.8	76.5	14.8	78.7	14.7	79.3	15.0	79.1	16.3
	Province	n/a	n/a	n/a	n/a	n/a	n/a	66.8	7.8	67.2	7.9
Mathematics 9	School	n/a	n/a	n/a	n/a	n/a	n/a	n/a	n/a	*	*
	Authority	n/a	n/a	n/a	n/a	n/a	n/a	n/a	n/a	57.1	10.6
	Province	n/a	n/a	n/a	n/a	n/a	n/a	n/a	n/a	66.1	17.3
Science 9	School	*	*	45.5	0.0	*	*	50.0	5.0	*	*
	Authority	62.4	9.1	63.8	6.0	68.9	12.0	70.3	12.0	68.2	12.9
	Province	69.6	14.7	69.3	13.0	72.2	15.8	73.6	17.7	74.9	20.8
Social Studies 9	School	n/a	n/a	n/a	n/a	n/a	n/a	55.0	5.0	*	*
	Authority	n/a	n/a	n/a	n/a	n/a	n/a	63.6	13.5	59.9	13.4
	Province	n/a	n/a	n/a	n/a	n/a	n/a	68.9	18.8	67.2	19.0

Note: Data values have been suppressed where the number of students is less than 6. Suppression is marked with an asterisk (*).

** "A" = Acceptable; "E" = Excellence — the percentages achieving the acceptable standard include the percentages achieving the standard of excellence.

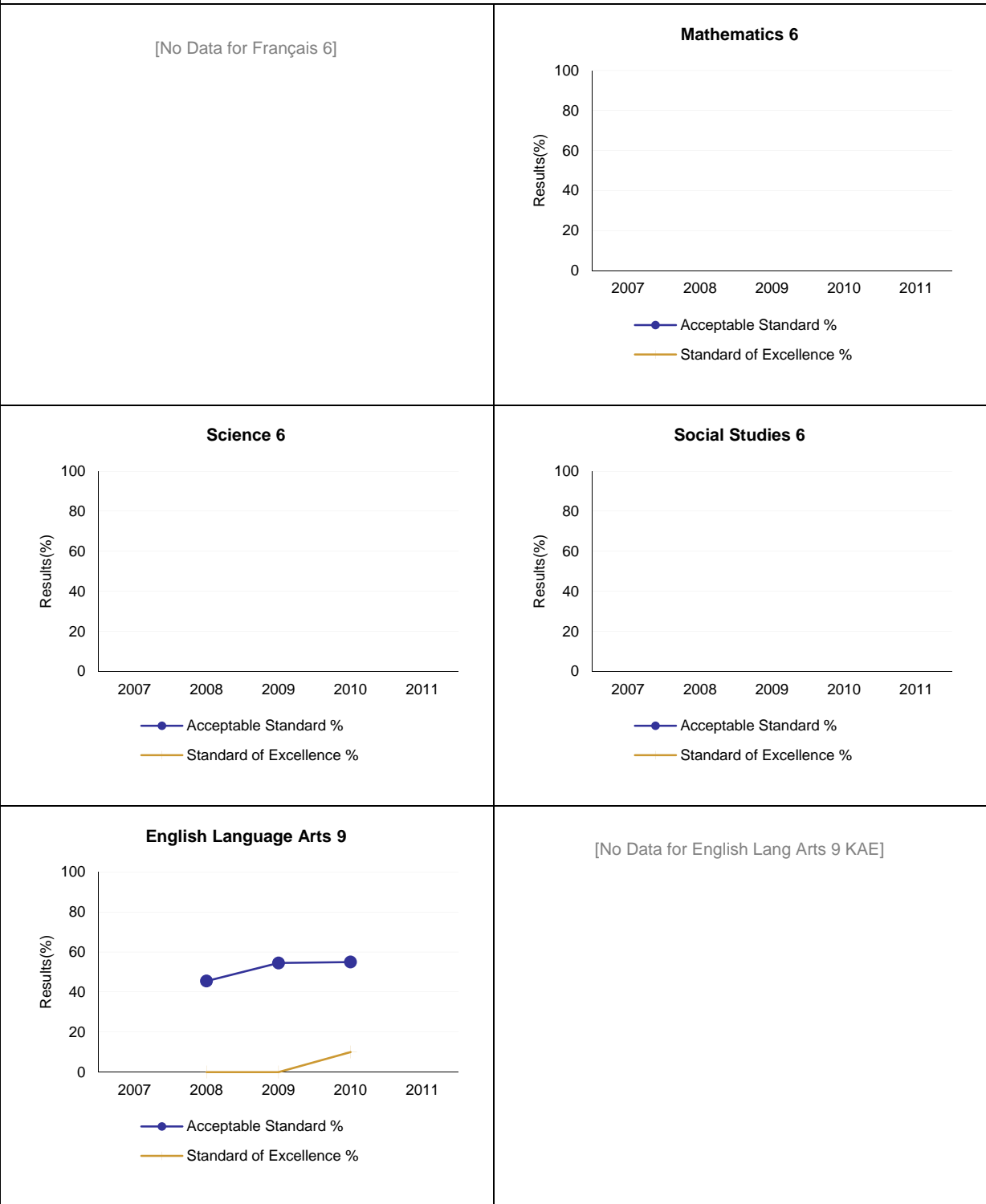
As students outside of Alberta cannot write PATs and because many families choose not to, these results are skewed.

Graph of Provincial Achievement Test Results by Course

<p>English Language Arts 3</p> <p>Results(%)</p> <p>2007 2008 2009 2010 2011</p> <p>Acceptable Standard % Standard of Excellence %</p>	<p>[No Data for French Language Arts 3]</p>
<p>[No Data for Français 3]</p>	<p>Mathematics 3</p> <p>Results(%)</p> <p>2007 2008 2009 2010 2011</p> <p>Acceptable Standard % Standard of Excellence %</p>
<p>English Language Arts 6</p> <p>Results(%)</p> <p>2007 2008 2009 2010 2011</p> <p>Acceptable Standard % Standard of Excellence %</p>	<p>[No Data for French Language Arts 6]</p>

Note: Data values have been suppressed where the number of students is less than 6. Suppression is marked with an asterisk (*).

Graph of Provincial Achievement Test Results by Course

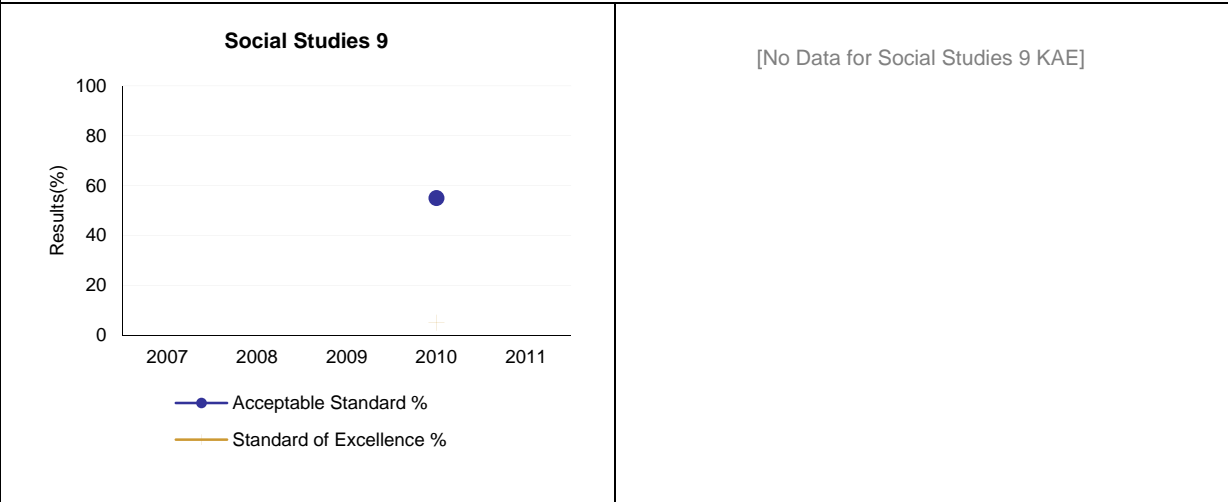


Note: Data values have been suppressed where the number of students is less than 6. Suppression is marked with an asterisk (*).

Graph of Provincial Achievement Test Results by Course										
<p>[No Data for French Language Arts 9]</p>	<p>[No Data for Français 9]</p>									
<p style="text-align: center;">Mathematics 9</p> <p>Results(%)</p> <p>2007 2008 2009 2010 2011</p> <p>● Acceptable Standard % — Standard of Excellence %</p>	<p>[No Data for Mathematics 9 KAE]</p>									
<p style="text-align: center;">Science 9</p> <p>Results(%)</p> <p>2007 2008 2009 2010 2011</p> <p>● Acceptable Standard % — Standard of Excellence %</p> <table border="1"> <caption>Science 9 Data</caption> <thead> <tr> <th>Year</th> <th>Acceptable Standard %</th> <th>Standard of Excellence %</th> </tr> </thead> <tbody> <tr> <td>2008</td> <td>45</td> <td>0</td> </tr> <tr> <td>2010</td> <td>50</td> <td>5</td> </tr> </tbody> </table>	Year	Acceptable Standard %	Standard of Excellence %	2008	45	0	2010	50	5	<p>[No Data for Science 9 KAE]</p>
Year	Acceptable Standard %	Standard of Excellence %								
2008	45	0								
2010	50	5								

Note: Data values have been suppressed where the number of students is less than 6. Suppression is marked with an asterisk (*).

Graph of Provincial Achievement Test Results by Course



Note: Data values have been suppressed where the number of students is less than 6. Suppression is marked with an asterisk (*).

PAT Results Course By Course Summary By Enrolled With Measure Evaluation

Course	Measure	Northstar Academy - Canada						Alberta				
		Achievement	Improvement	Overall	2011		Prev 3 Yr Avg		2011		Prev 3 Yr Avg	
					N	%	N	%	N	%	N	%
English Language Arts 3	Acceptable Standard	*	*	*	1	*	n/a	n/a	42,944	81.8	42,052	81.0
	Standard of Excellence	*	*	*	1	*	n/a	n/a	42,944	17.5	42,052	17.9
French Language Arts 3	Acceptable Standard	n/a	n/a	n/a	n/a	n/a	n/a	n/a	3,180	80.6	3,046	83.9
	Standard of Excellence	n/a	n/a	n/a	n/a	n/a	n/a	n/a	3,180	15.8	3,046	16.1
Français 3	Acceptable Standard	n/a	n/a	n/a	n/a	n/a	n/a	n/a	532	84.2	520	84.4
	Standard of Excellence	n/a	n/a	n/a	n/a	n/a	n/a	n/a	532	18.6	520	16.3
English Language Arts 6	Acceptable Standard	*	*	*	1	*	n/a	n/a	43,433	83.0	43,646	82.1
	Standard of Excellence	*	*	*	1	*	n/a	n/a	43,433	18.5	43,646	19.6
French Language Arts 6	Acceptable Standard	n/a	n/a	n/a	n/a	n/a	n/a	n/a	2,635	89.4	2,307	89.2
	Standard of Excellence	n/a	n/a	n/a	n/a	n/a	n/a	n/a	2,635	17.1	2,307	15.3
Français 6	Acceptable Standard	n/a	n/a	n/a	n/a	n/a	n/a	n/a	460	92.2	442	92.7
	Standard of Excellence	n/a	n/a	n/a	n/a	n/a	n/a	n/a	460	17.6	442	18.0
Science 6	Acceptable Standard	*	*	*	1	*	n/a	n/a	43,441	76.2	43,534	76.0
	Standard of Excellence	*	*	*	1	*	n/a	n/a	43,441	25.0	43,534	25.1
Social Studies 6	Acceptable Standard	*	*	*	1	*	n/a	n/a	43,537	71.1	43,601	71.0
	Standard of Excellence	*	*	*	1	*	n/a	n/a	43,537	18.5	43,601	16.4
English Language Arts 9	Acceptable Standard	*	*	*	13	*	14	51.7	43,024	79.1	43,763	78.2
	Standard of Excellence	*	*	*	13	*	14	3.3	43,024	16.3	43,763	14.8
English Lang Arts 9 KAE	Acceptable Standard	n/a	n/a	n/a	n/a	n/a	n/a	n/a	1,606	67.2	1,587	66.8
	Standard of Excellence	n/a	n/a	n/a	n/a	n/a	n/a	n/a	1,606	7.9	1,587	7.8
French Language Arts 9	Acceptable Standard	n/a	n/a	n/a	n/a	n/a	n/a	n/a	2,331	88.8	2,324	84.1
	Standard of Excellence	n/a	n/a	n/a	n/a	n/a	n/a	n/a	2,331	15.0	2,324	11.7
Français 9	Acceptable Standard	n/a	n/a	n/a	n/a	n/a	n/a	n/a	336	90.2	324	84.9
	Standard of Excellence	n/a	n/a	n/a	n/a	n/a	n/a	n/a	336	15.8	324	12.4
Mathematics 9 KAE	Acceptable Standard	n/a	n/a	n/a	n/a	n/a	n/a	n/a	1,936	64.9	1,894	65.6
	Standard of Excellence	n/a	n/a	n/a	n/a	n/a	n/a	n/a	1,936	14.9	1,894	15.3
Science 9	Acceptable Standard	*	*	*	13	*	16	47.7	42,932	74.9	43,553	71.7
	Standard of Excellence	*	*	*	13	*	16	2.5	42,932	20.8	43,553	15.5
Science 9 KAE	Acceptable Standard	n/a	n/a	n/a	n/a	n/a	n/a	n/a	1,586	69.5	1,526	67.2
	Standard of Excellence	n/a	n/a	n/a	n/a	n/a	n/a	n/a	1,586	15.3	1,526	14.3
Social Studies 9	Acceptable Standard	*	*	*	13	*	20	55.0	43,128	67.2	43,769	68.9
	Standard of Excellence	*	*	*	13	*	20	5.0	43,128	19.0	43,769	18.8
Social Studies 9 KAE	Acceptable Standard	n/a	n/a	n/a	n/a	n/a	n/a	n/a	1,573	61.9	1,557	64.6
	Standard of Excellence	n/a	n/a	n/a	n/a	n/a	n/a	n/a	1,573	13.6	1,557	15.7

Note: Data values have been suppressed where the number of students is less than 6. Suppression is marked with an asterisk (*).

Achievement Evaluation is not calculated for courses that do not have sufficient data available, either due to too few jurisdictions offering the course or because of changes in tests.

Evaluations for Mathematics (Grades 3, 6, 9) are not calculated due to the changes in the tests in 2010.

Measure Evaluation Reference - Achievement Evaluation

Achievement evaluation is based upon a comparison of Current Year data to a set of standards which remain consistent over time. The Standards are calculated by taking the 3 year average of baseline data for each measure across all school jurisdictions and calculating the 5th, 25th, 75th, and 95th percentiles. Once calculated, these standards remain in place from year to year to allow for consistent planning and evaluation.

The table below shows the range of values defining the 5 achievement evaluation levels for each measure.

Course	Measure	Very Low	Low	Intermediate	High	Very High
English Language Arts 3	Acceptable Standard	0.00 - 72.53	72.53 - 80.49	80.49 - 89.12	89.12 - 93.04	93.04 - 100.00
	Standard of Excellence	0.00 - 6.06	6.06 - 11.35	11.35 - 16.93	16.93 - 20.27	20.27 - 100.00
English Language Arts 6	Acceptable Standard	0.00 - 67.95	67.95 - 78.40	78.40 - 86.09	86.09 - 91.37	91.37 - 100.00
	Standard of Excellence	0.00 - 6.83	6.83 - 11.65	11.65 - 17.36	17.36 - 22.46	22.46 - 100.00
French Language Arts 6	Acceptable Standard	0.00 - 41.69	41.69 - 73.54	73.54 - 92.32	92.32 - 97.93	97.93 - 100.00
	Standard of Excellence	0.00 - 2.72	2.72 - 8.13	8.13 - 15.29	15.29 - 23.86	23.86 - 100.00
Science 6	Acceptable Standard	0.00 - 60.36	60.36 - 78.51	78.51 - 86.46	86.46 - 90.64	90.64 - 100.00
	Standard of Excellence	0.00 - 11.74	11.74 - 17.42	17.42 - 25.34	25.34 - 34.31	34.31 - 100.00
English Language Arts 9	Acceptable Standard	0.00 - 63.55	63.55 - 75.66	75.66 - 83.70	83.70 - 90.27	90.27 - 100.00
	Standard of Excellence	0.00 - 5.96	5.96 - 9.43	9.43 - 14.72	14.72 - 20.46	20.46 - 100.00
French Language Arts 9	Acceptable Standard	0.00 - 67.59	67.59 - 81.33	81.33 - 92.06	92.06 - 97.26	97.26 - 100.00
	Standard of Excellence	0.00 - 1.67	1.67 - 6.81	6.81 - 17.11	17.11 - 28.68	28.68 - 100.00
Science 9	Acceptable Standard	0.00 - 50.57	50.57 - 60.14	60.14 - 72.50	72.50 - 76.89	76.89 - 100.00
	Standard of Excellence	0.00 - 3.39	3.39 - 6.71	6.71 - 11.81	11.81 - 15.85	15.85 - 100.00

Notes:

The range of values at each evaluation level is interpreted as greater than or equal to the lower value, and less than the higher value. For the Very High evaluation level, values range from greater than or equal to the lower value to 100%.

Achievement Evaluation is not calculated for courses that do not have sufficient data available, either due to too few jurisdictions offering the course or because of changes in tests.

Evaluations for Mathematics (Grades 3, 6, 9) are not calculated due to the changes in the tests in 2010.

Improvement Table

For each jurisdiction, improvement evaluation consists of comparing the Current Year result for each measure with the previous three-year average. A chi-square statistical test is used to determine the significance of the improvement. This test takes into account the size of the jurisdiction in the calculation to make improvement evaluation fair across jurisdictions of different sizes.

The table below shows the definition of the 5 improvement evaluation levels based upon the chi-square result.

Evaluation Category	Chi-Square Range
Declined Significantly	3.84 + (current < previous 3-year average)
Declined	1.00 - 3.83 (current < previous 3-year average)
Maintained	less than 1.00
Improved	1.00 - 3.83 (current > previous 3-year average)
Improved Significantly	3.84 + (current > previous 3-year average)

Overall Evaluation Table

The overall evaluation combines the Achievement Evaluation and the Improvement Evaluation. The table below illustrates how the Achievement and Improvement evaluations are combined to get the overall evaluation.

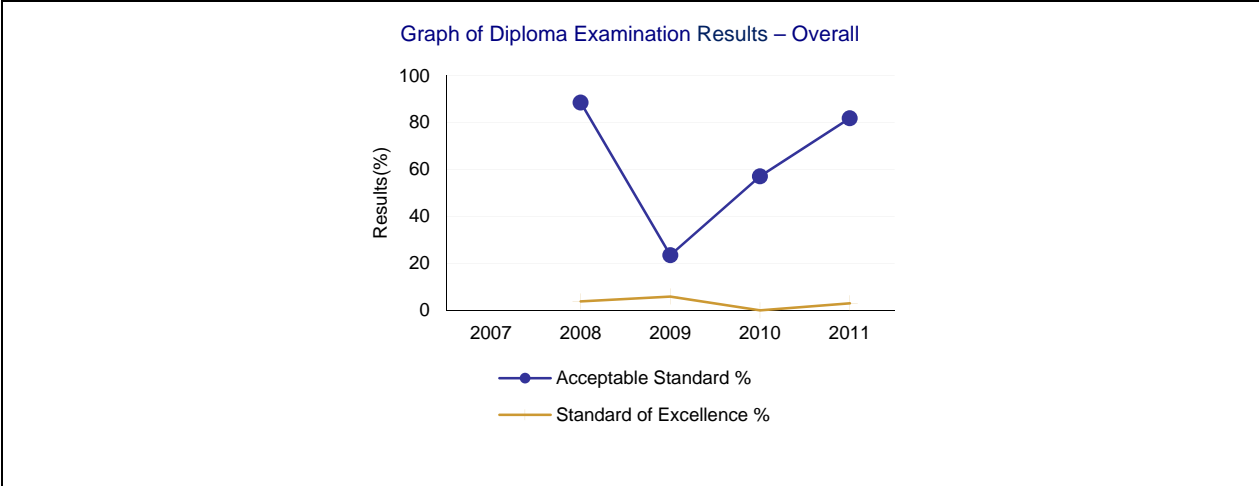
	Achievement				
	Very High	High	Intermediate	Low	Very Low
Improved Significantly	Excellent	Good	Good	Good	Acceptable
Improved	Excellent	Good	Good	Acceptable	Issue
Maintained	Excellent	Good	Acceptable	Issue	Concern
Declined	Good	Acceptable	Issue	Issue	Concern
Declined Significantly	Acceptable	Issue	Issue	Concern	Concern

Diploma Examination Results – Measure Details

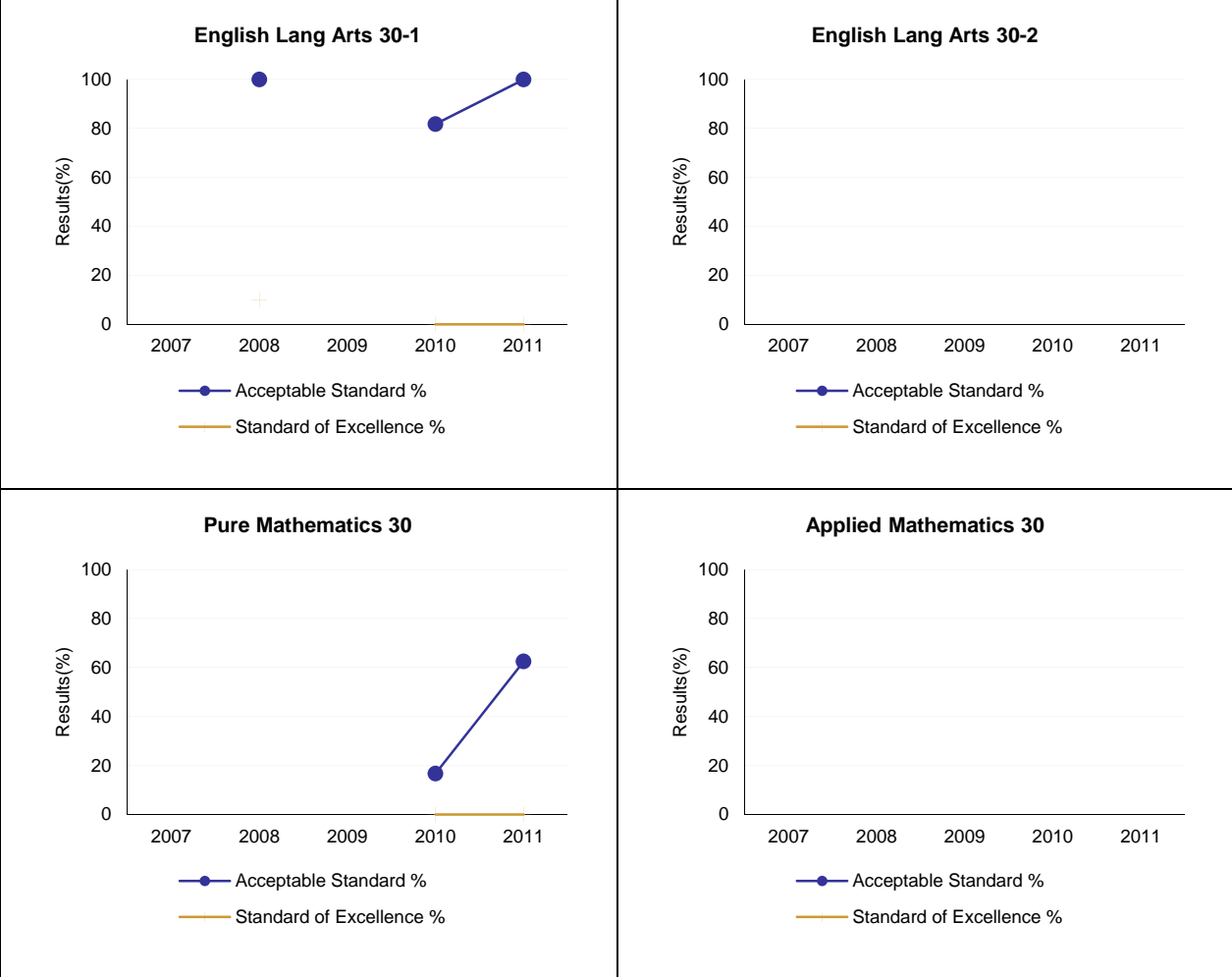
Diploma Exam Course by Course Results by Students Writing.											
		Results (in percentages)									
		2007		2008		2009		2010		2011	
		A	E	A	E	A	E	A	E	A	E
English Lang Arts 30-1	School	*	*	100.0	10.0	*	*	81.8	0.0	100.0	0.0
	Authority	83.7	16.6	85.3	13.8	82.4	9.1	78.3	7.1	76.6	5.8
	Province	87.7	19.0	87.1	15.5	86.1	12.3	85.1	10.1	84.4	10.1
English Lang Arts 30-2	School	n/a	n/a	*	*	*	*	n/a	n/a	*	*
	Authority	85.9	5.6	85.5	7.0	79.8	8.3	82.2	7.5	85.5	5.7
	Province	88.7	9.7	88.9	8.8	88.2	8.5	88.8	9.8	88.6	9.1
French Lang Arts 30-1	School	n/a	n/a	n/a	n/a	n/a	n/a	n/a	n/a	n/a	n/a
	Authority	n/a	n/a	n/a	n/a	n/a	n/a	n/a	n/a	n/a	n/a
	Province	95.6	23.1	94.9	24.5	95.1	18.9	93.7	16.3	95.3	14.3
Pure Mathematics 30	School	*	*	*	*	*	*	16.7	0.0	62.5	0.0
	Authority	77.3	23.4	73.9	18.6	70.7	18.8	78.2	27.3	72.2	24.1
	Province	81.1	24.6	81.3	25.8	82.1	26.3	82.9	29.7	81.0	28.7
Applied Mathematics 30	School	n/a	n/a	*	*	*	*	*	*	n/a	n/a
	Authority	77.8	12.8	77.6	11.2	72.7	9.9	80.0	11.3	70.7	9.2
	Province	77.6	12.1	76.4	10.7	79.4	13.5	77.3	12.6	74.3	9.8
Social Studies 30	School	*	*	90.9	9.1	83.3	0.0	n/a	n/a	n/a	n/a
	Authority	82.8	18.5	88.5	14.6	79.3	15.3	77.1	2.9	*	*
	Province	86.1	24.6	84.7	21.5	84.2	21.4	67.8	10.4	69.7	12.1
Social Studies 30-1	School	n/a	n/a	n/a	n/a	n/a	n/a	85.7	28.6	88.9	0.0
	Authority	n/a	n/a	n/a	n/a	n/a	n/a	81.1	12.2	75.9	7.8
	Province	n/a	n/a	n/a	n/a	n/a	n/a	84.5	16.1	82.8	14.9
Social Studies 33	School	*	*	*	*	*	*	n/a	n/a	n/a	n/a
	Authority	82.6	16.4	79.7	12.9	82.1	17.4	74.5	8.5	75.0	12.5
	Province	84.8	19.6	85.3	18.9	85.6	20.2	76.4	11.5	69.0	21.4
Social Studies 30-2	School	n/a	n/a	n/a	n/a	n/a	n/a	n/a	n/a	*	*
	Authority	n/a	n/a	n/a	n/a	n/a	n/a	78.9	8.0	81.7	12.1
	Province	n/a	n/a	n/a	n/a	n/a	n/a	85.0	13.7	85.6	15.9
Biology 30	School	n/a	n/a	*	*	0.0	0.0	50.0	0.0	62.5	12.5
	Authority	83.0	24.1	80.9	19.5	77.0	23.0	73.0	21.5	70.9	20.0
	Province	83.5	27.4	82.3	26.3	83.0	26.6	81.4	28.1	81.9	29.8
Chemistry 30 Old	School	*	*	*	*	n/a	n/a	n/a	n/a	n/a	n/a
	Authority	84.5	31.9	85.4	30.1	*	*	*	*	n/a	n/a
	Province	89.3	37.9	89.2	39.2	77.6	19.5	87.5	37.5	n/a	n/a
Chemistry 30	School	n/a	n/a	n/a	n/a	*	*	*	*	83.3	16.7
	Authority	n/a	n/a	n/a	n/a	73.3	20.4	75.5	28.3	73.3	20.6
	Province	n/a	n/a	n/a	n/a	76.3	27.7	79.0	29.9	75.1	27.7
Physics 30 Old	School	n/a	n/a	n/a	n/a	n/a	n/a	n/a	n/a	n/a	n/a
	Authority	88.5	29.1	80.8	21.6	*	*	*	*	n/a	n/a
	Province	86.1	29.3	85.7	32.0	74.4	25.6	75.0	25.0	n/a	n/a
Physics 30	School	n/a	n/a	n/a	n/a	n/a	n/a	*	*	*	*
	Authority	n/a	n/a	n/a	n/a	78.1	9.6	60.9	11.3	71.1	18.9
	Province	n/a	n/a	n/a	n/a	79.3	23.1	73.9	20.3	76.7	27.7
Science 30	School	n/a	n/a	n/a	n/a	n/a	n/a	n/a	n/a	n/a	n/a
	Authority	n/a	n/a	*	*	*	*	*	*	*	*
	Province	87.1	18.0	88.6	21.6	86.0	20.9	80.1	22.8	80.4	21.0

Note: Data values have been suppressed where the number of students is less than 6. Suppression is marked with an asterisk (*).

** "A" = Acceptable; "E" = Excellence — the percentages achieving the acceptable standard include the percentages achieving the standard of excellence.



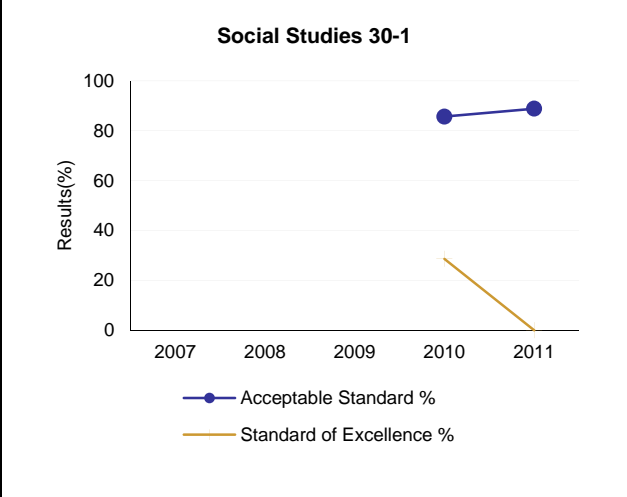
Diploma Examination Results by Course



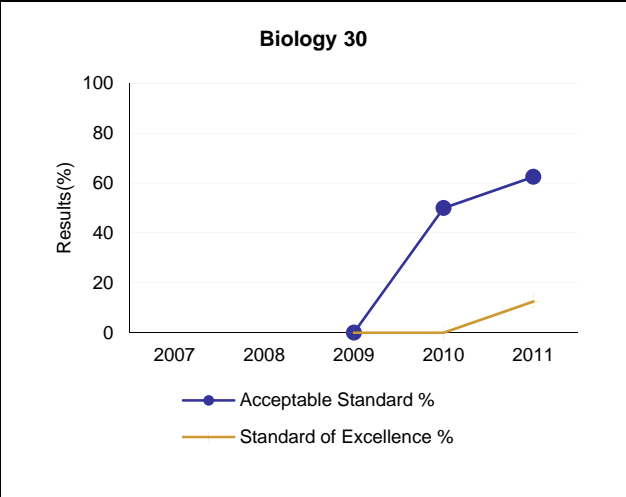
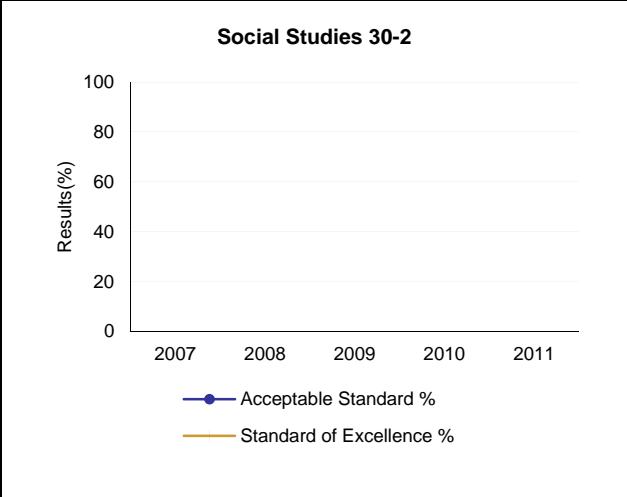
Note: Data values have been suppressed where the number of students is less than 6. Suppression is marked with an asterisk (*).

Diploma Examination Results by Course

[No Data for Social Studies 30]



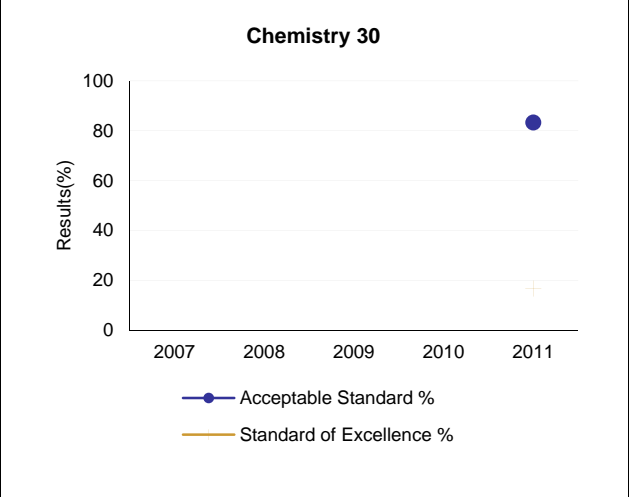
[No Data for Social Studies 33]



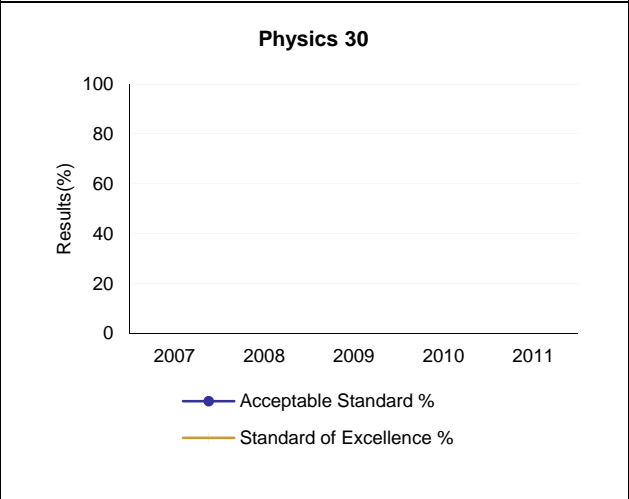
[No Data for Chemistry 30 Old]

Note: Data values have been suppressed where the number of students is less than 6. Suppression is marked with an asterisk (*).

Diploma Examination Results by Course



[No Data for Physics 30 Old]



[No Data for Science 30]

Note: Data values have been suppressed where the number of students is less than 6. Suppression is marked with an asterisk (*).

Diploma Examination Results Course By Course Summary With Measure Evaluation

Course	Measure	Northstar Academy - Canada						Alberta				
		Achievement	Improvement	Overall	2011		Prev 3 Yr Avg		2011		Prev 3 Yr Avg	
					N	%	N	%	N	%	N	%
English Lang Arts 30-1	Acceptable Standard	Very High	Improved	Excellent	12	100.0	11	90.9	29,063	84.4	28,502	86.1
	Standard of Excellence	Very Low	Maintained	Concern	12	0.0	11	5.0	29,063	10.1	28,502	12.6
English Lang Arts 30-2	Acceptable Standard	*	*	*	5	*	n/a	n/a	14,550	88.6	13,676	88.6
	Standard of Excellence	*	*	*	5	*	n/a	n/a	14,550	9.1	13,676	9.0
French Lang Arts 30-1	Acceptable Standard	n/a	n/a	n/a	n/a	n/a	n/a	n/a	1,269	95.3	1,262	94.6
	Standard of Excellence	n/a	n/a	n/a	n/a	n/a	n/a	n/a	1,269	14.3	1,262	19.9
Français 30-1	Acceptable Standard	n/a	n/a	n/a	n/a	n/a	n/a	n/a	144	93.8	139	95.8
	Standard of Excellence	n/a	n/a	n/a	n/a	n/a	n/a	n/a	144	20.1	139	24.7
Pure Mathematics 30	Acceptable Standard	Low	Improved	Acceptable	8	62.5	6	16.7	23,033	81.0	22,548	82.1
	Standard of Excellence	Very Low	Maintained	Concern	8	0.0	6	0.0	23,033	28.7	22,548	27.3
Applied Mathematics 30	Acceptable Standard	n/a	n/a	n/a	n/a	n/a	n/a	n/a	10,807	74.3	10,371	77.7
	Standard of Excellence	n/a	n/a	n/a	n/a	n/a	n/a	n/a	10,807	9.8	10,371	12.3
Social Studies 30-1	Acceptable Standard	n/a	Maintained	n/a	9	88.9	7	85.7	23,603	82.8	23,484	84.5
	Standard of Excellence	n/a	Declined	n/a	9	0.0	7	28.6	23,603	14.9	23,484	16.1
Social Studies 30-2	Acceptable Standard	*	*	*	3	*	n/a	n/a	16,537	85.6	14,903	85.0
	Standard of Excellence	*	*	*	3	*	n/a	n/a	16,537	15.9	14,903	13.7
Biology 30	Acceptable Standard	Very Low	Improved	Issue	8	62.5	8	25.0	22,817	81.9	21,372	82.2
	Standard of Excellence	Low	Improved	Acceptable	8	12.5	8	0.0	22,817	29.8	21,372	27.0
Chemistry 30	Acceptable Standard	n/a	n/a	n/a	6	83.3	n/a	n/a	18,792	75.1	18,152	77.6
	Standard of Excellence	n/a	n/a	n/a	6	16.7	n/a	n/a	18,792	27.7	18,152	28.8
Physics 30	Acceptable Standard	*	*	*	4	*	n/a	n/a	10,660	76.7	10,216	76.6
	Standard of Excellence	*	*	*	4	*	n/a	n/a	10,660	27.7	10,216	21.7
Science 30	Acceptable Standard	n/a	n/a	n/a	n/a	n/a	n/a	n/a	5,007	80.4	4,450	84.9
	Standard of Excellence	n/a	n/a	n/a	n/a	n/a	n/a	n/a	5,007	21.0	4,450	21.8

Note: Data values have been suppressed where the number of students is less than 6. Suppression is marked with an asterisk (*).

Achievement Evaluation is not calculated for courses that do not have sufficient data available, either due to too few jurisdictions offering the course or because of changes in examinations.

Measure Evaluation Reference - Achievement Evaluation

Achievement evaluation is based upon a comparison of Current Year data to a set of standards which remain consistent over time. The Standards are calculated by taking the 3 year average of baseline data for each measure across all school jurisdictions and calculating the 5th, 25th, 75th, and 95th percentiles. Once calculated, these standards remain in place from year to year to allow for consistent planning and evaluation.

The table below shows the range of values defining the 5 achievement evaluation levels for each measure.

Course	Measure	Very Low	Low	Intermediate	High	Very High
English Lang Arts 30-1	Acceptable Standard	0.00 - 83.76	83.76 - 92.02	92.02 - 95.13	95.13 - 100.00	100.00 - 100.00
	Standard of Excellence	0.00 - 6.22	6.22 - 13.46	13.46 - 20.88	20.88 - 27.39	27.39 - 100.00
English Lang Arts 30-2	Acceptable Standard	0.00 - 70.83	70.83 - 82.43	82.43 - 90.72	90.72 - 96.00	96.00 - 100.00
	Standard of Excellence	0.00 - 0.00	0.00 - 3.13	3.13 - 8.65	8.65 - 11.61	11.61 - 100.00
French Lang Arts 30-1	Acceptable Standard	0.00 - 77.27	77.27 - 93.33	93.33 - 100.00	100.00 - 100.00	100.00 - 100.00
	Standard of Excellence	0.00 - 0.00	0.00 - 5.49	5.49 - 19.84	19.84 - 28.00	28.00 - 100.00
Pure Mathematics 30	Acceptable Standard	0.00 - 54.07	54.07 - 76.74	76.74 - 86.06	86.06 - 92.18	92.18 - 100.00
	Standard of Excellence	0.00 - 6.15	6.15 - 18.46	18.46 - 29.38	29.38 - 34.62	34.62 - 100.00
Applied Mathematics 30	Acceptable Standard	0.00 - 73.06	73.06 - 80.94	80.94 - 90.03	90.03 - 91.69	91.69 - 100.00
	Standard of Excellence	0.00 - 4.57	4.57 - 10.29	10.29 - 16.08	16.08 - 23.77	23.77 - 100.00
Biology 30	Acceptable Standard	0.00 - 67.51	67.51 - 78.03	78.03 - 85.82	85.82 - 89.41	89.41 - 100.00
	Standard of Excellence	0.00 - 12.33	12.33 - 19.00	19.00 - 25.60	25.60 - 30.05	30.05 - 100.00
Science 30	Acceptable Standard	0.00 - 76.11	76.11 - 83.33	83.33 - 91.76	91.76 - 97.14	97.14 - 100.00
	Standard of Excellence	0.00 - 6.98	6.98 - 11.36	11.36 - 21.80	21.80 - 36.81	36.81 - 100.00

Notes:

The range of values at each evaluation level is interpreted as greater than or equal to the lower value, and less than the higher value. For the Very High category, values range from greater than or equal to the lower value to 100%.

Achievement Evaluation is not calculated for courses that do not have sufficient data available, either due to too few jurisdictions offering the course or because of changes in examinations.

Improvement Table

For each jurisdiction, improvement evaluation consists of comparing the Current Year result for each measure with the previous three-year average. A chi-square statistical test is used to determine the significance of the improvement. This test takes into account the size of the jurisdiction in the calculation to make improvement evaluation fair across jurisdictions of different sizes.

The table below shows the definition of the 5 improvement evaluation levels based upon the chi-square result.

Evaluation Category	Chi-Square Range
Declined Significantly	3.84 + (current < previous 3-year average)
Declined	1.00 - 3.83 (current < previous 3-year average)
Maintained	less than 1.00
Improved	1.00 - 3.83 (current > previous 3-year average)
Improved Significantly	3.84 + (current > previous 3-year average)

Overall Evaluation Table

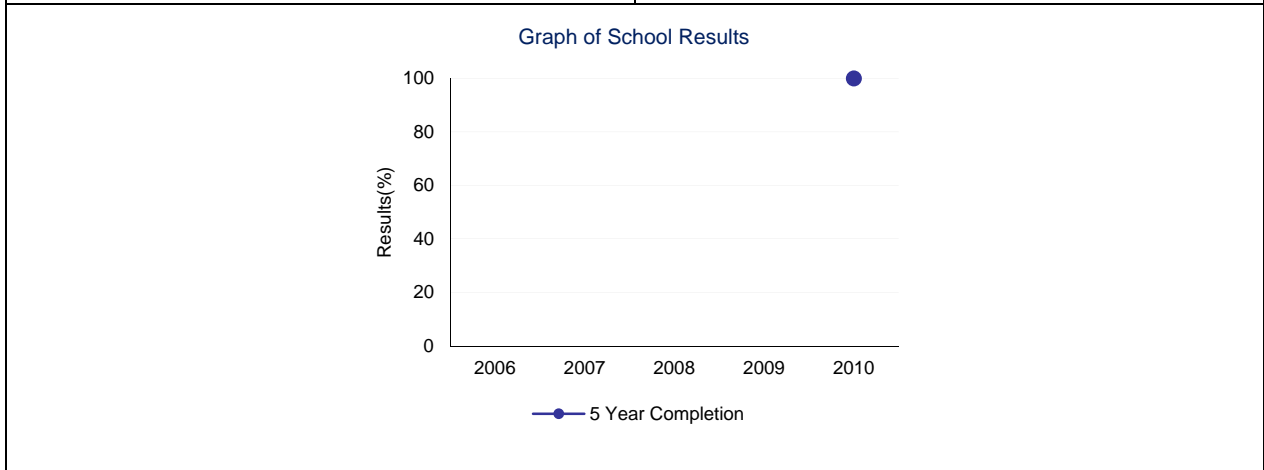
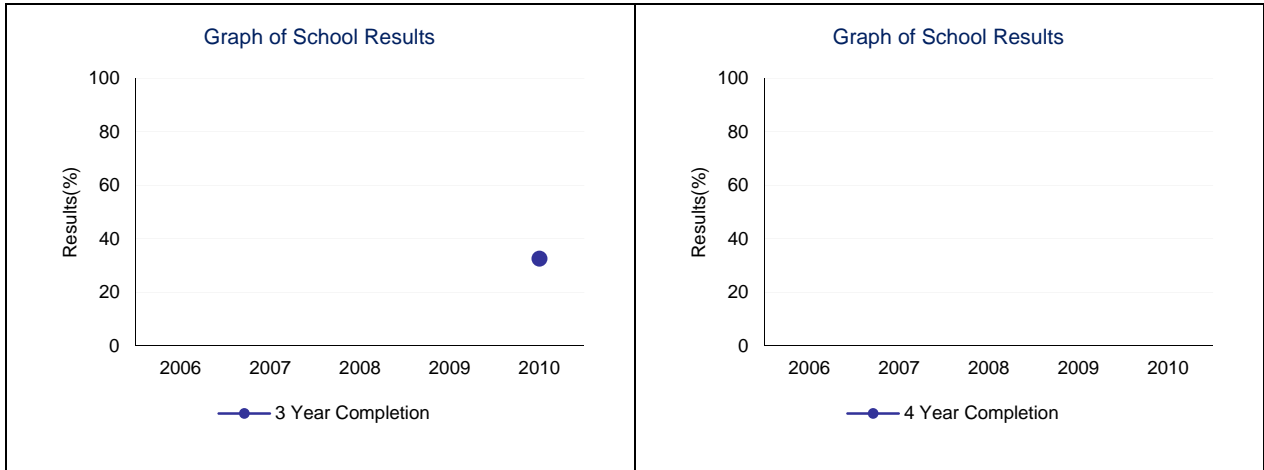
The overall evaluation combines the Achievement Evaluation and the Improvement Evaluation. The table below illustrates how the Achievement and Improvement evaluations are combined to get the overall evaluation.

	Achievement				
	Very High	High	Intermediate	Low	Very Low
Improved Significantly	Excellent	Good	Good	Good	Acceptable
Improved	Excellent	Good	Good	Acceptable	Issue
Maintained	Excellent	Good	Acceptable	Issue	Concern
Declined	Good	Acceptable	Issue	Issue	Concern
Declined Significantly	Acceptable	Issue	Issue	Concern	Concern

High School Completion Rate – Measure Details

High School Completion Rate - percentages of students who completed high school within three, four and five years of entering Grade 10.

	School					Authority					Province				
	2006	2007	2008	2009	2010	2006	2007	2008	2009	2010	2006	2007	2008	2009	2010
3 Year Completion	*	n/a	*	*	32.6	73.5	67.8	68.1	67.7	72.6	70.6	71.1	70.8	71.5	72.6
4 Year Completion	n/a	*	n/a	*	*	73.6	77.5	72.7	73.5	74.2	76.1	76.1	76.3	76.1	76.9
5 Year Completion	n/a	n/a	*	n/a	100.0	78.3	75.6	79.6	74.6	77.0	78.1	78.9	78.7	79.0	79.0

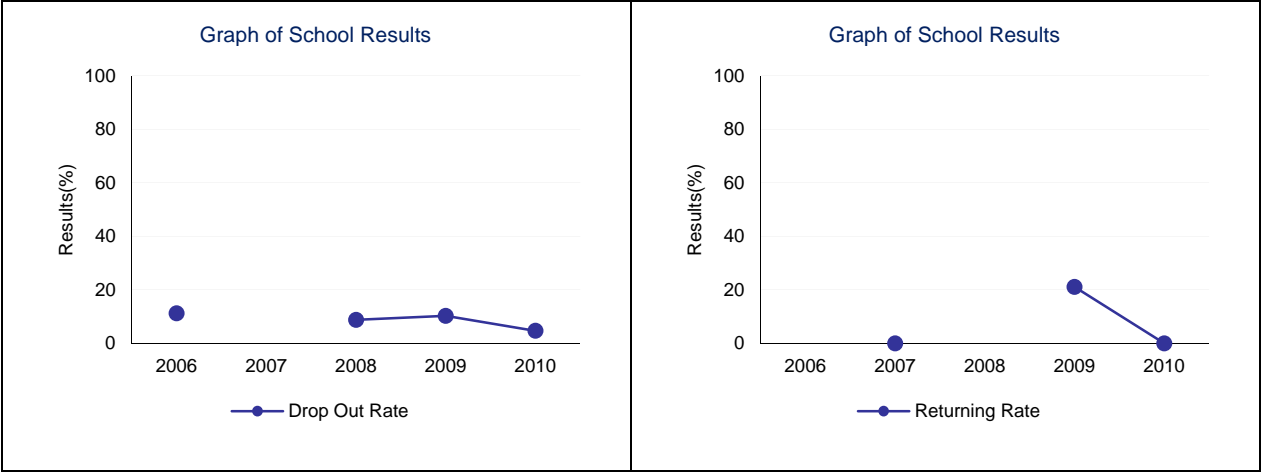


Note: Data values have been suppressed where the number of respondents is less than 6. Suppression is marked with an asterisk (*).

Drop Out Rate – Measure Details

Drop Out Rate - annual dropout rate of students aged 14 to 18

	School					Authority					Province				
	2006	2007	2008	2009	2010	2006	2007	2008	2009	2010	2006	2007	2008	2009	2010
Drop Out Rate	11.2	*	8.8	10.3	4.7	4.7	5.2	5.4	4.5	4.7	4.7	5.0	4.8	4.3	4.2
Returning Rate	*	0.0	*	21.1	0.0	19.8	19.6	19.0	23.8	22.4	21.2	21.3	19.8	23.5	27.9

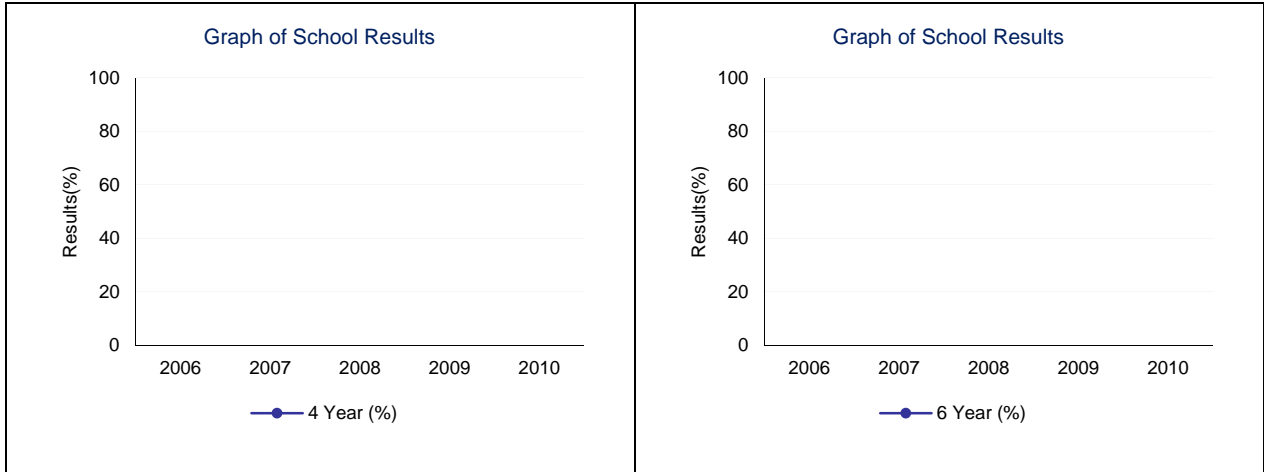


Note: Data values have been suppressed where the number of respondents is less than 6. Suppression is marked with an asterisk (*).

High School to Post-secondary Transition Rate – Measure Details

High school to post-secondary transition rate of students within four and six years of entering Grade 10.

	School					Authority					Province				
	2006	2007	2008	2009	2010	2006	2007	2008	2009	2010	2006	2007	2008	2009	2010
4 Year Rate	n/a	*	n/a	*	*	33.9	29.3	31.5	29.5	26.5	37.7	38.7	38.9	37.5	37.8
6 Year Rate	n/a	n/a	n/a	*	n/a	52.6	48.8	53.6	51.3	51.8	58.1	58.8	59.2	59.8	59.3

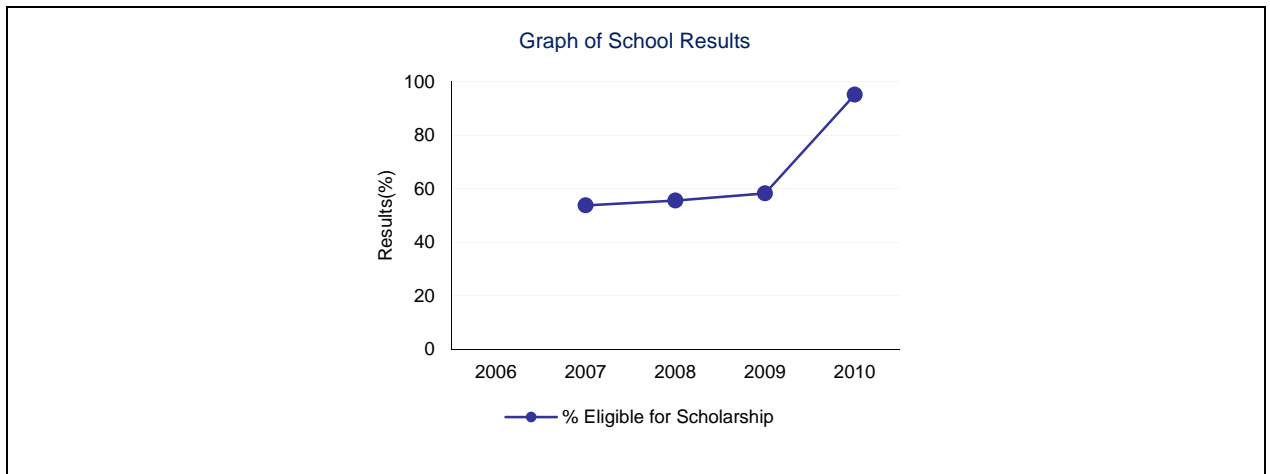


Note: Data values have been suppressed where the number of respondents is less than 6. Suppression is marked with an asterisk (*).

Rutherford Eligibility Rate – Measure Details

Percentage of Grade 12 students eligible for a Rutherford Scholarship.															
	School					Authority					Province				
	2006	2007	2008	2009	2010	2006	2007	2008	2009	2010	2006	2007	2008	2009	2010
Rutherford Scholarship Eligibility Rate (Revised)	n/a	53.8	55.6	58.3	95.2	56.0	54.4	56.6	52.8	59.3	56.1	56.8	57.3	56.9	59.6

Rutherford eligibility rate details.									
Reporting School Year	Total Students	Grade 10 Rutherford		Grade 11 Rutherford		Grade 12 Rutherford		Overall	
		Number of Students Eligible	Percent of Students Eligible	Number of Students Eligible	Percent of Students Eligible	Number of Students Eligible	Percent of Students Eligible	Number of Students Eligible	Percent of Students Eligible
2006		n/a	n/a	n/a	n/a	n/a	n/a	n/a	n/a
2007	13	7	53.8	5	38.5	2	15.4	7	53.8
2008	18	10	55.6	9	50.0	3	16.7	10	55.6
2009	24	11	45.8	13	54.2	7	29.2	14	58.3
2010	21	19	90.5	17	81.0	9	42.9	20	95.2

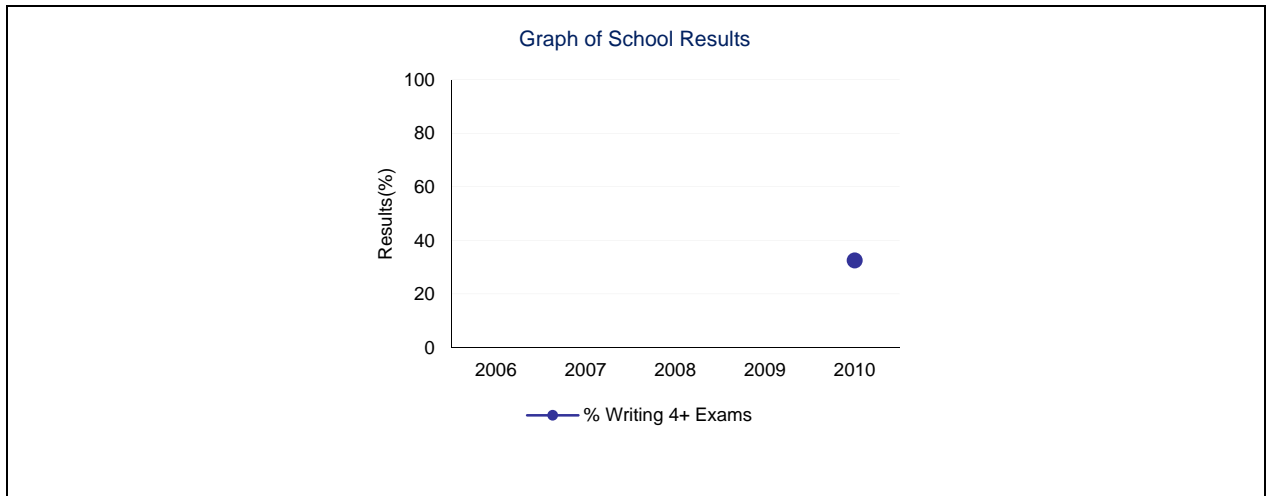


Note: Data values have been suppressed where the number of respondents is less than 6. Suppression is marked with an asterisk (*).

Diploma Examination Participation Rate – Measure Details

Diploma examination participation rate: Percentage of students writing 0 to 6 or more Diploma Examinations by the end their 3rd year of high school.

	School					Authority					Province				
	2006	2007	2008	2009	2010	2006	2007	2008	2009	2010	2006	2007	2008	2009	2010
% Writing 0 Exams	*	n/a	*	*	44.0	16.2	20.5	20.6	22.6	18.5	17.8	18.0	18.4	18.0	17.2
% Writing 1+ Exams	*	n/a	*	*	56.0	83.8	79.5	79.4	77.4	81.5	82.2	82.0	81.6	82.0	82.8
% Writing 2+ Exams	*	n/a	*	*	40.7	82.1	75.8	75.0	74.5	79.5	78.5	78.6	78.0	78.7	79.6
% Writing 3+ Exams	*	n/a	*	*	40.7	66.3	61.1	61.9	56.4	62.7	65.6	65.6	64.9	65.2	66.0
% Writing 4+ Exams	*	n/a	*	*	32.6	51.3	48.0	47.5	44.2	47.8	53.7	53.6	53.3	53.5	54.9
% Writing 5+ Exams	*	n/a	*	*	16.3	29.5	28.1	31.4	26.3	29.8	34.6	34.7	34.3	34.7	36.1
% Writing 6+ Exams	*	n/a	*	*	8.1	10.4	9.5	10.8	11.4	10.9	13.0	13.2	12.7	12.9	13.4



Percentage of students writing 1 or more Diploma Examinations by the end of their 3rd year of high school, by course and subject.

	School					Authority					Province				
	2006	2007	2008	2009	2010	2006	2007	2008	2009	2010	2006	2007	2008	2009	2010
English 30 / English Language Arts 30-1	*	n/a	*	*	46.2	53.2	53.7	48.5	47.9	51.2	54.7	54.5	53.8	54.0	54.5
English 33 / English Language Arts 30-2	*	n/a	*	*	0.0	27.6	21.5	27.6	26.6	28.7	23.5	23.6	24.0	24.5	25.1
Total of 1 or more English Diploma Exams	*	n/a	*	*	46.2	80.4	74.3	74.9	73.4	78.0	77.1	77.0	76.7	77.1	78.0
Social Studies 30	*	n/a	*	*	0.0	49.9	45.4	44.9	44.3	9.1	49.5	49.3	48.1	48.1	3.7
Social Studies 30-1	n/a	n/a	*	*	30.8	n/a	n/a	0.0	0.0	38.8	n/a	n/a	0.0	0.0	45.7
Social Studies 33	*	n/a	*	*	0.0	31.3	30.0	28.7	29.0	3.6	28.8	28.8	29.5	30.1	2.5
Social Studies 30-2	n/a	n/a	*	*	0.0	n/a	n/a	0.0	0.0	26.8	n/a	n/a	0.0	0.0	27.4
Total of 1 or more Social Diploma Exams	*	n/a	*	*	30.8	80.0	74.3	73.6	72.5	77.7	77.2	77.2	76.7	77.4	78.1
Mathematics 30 / Pure Mathematics 30	*	n/a	*	*	38.5	38.6	37.0	34.2	33.7	33.5	41.9	41.7	41.1	40.8	41.4
Mathematics 33 / Applied Mathematics 30	*	n/a	*	*	7.7	23.8	17.8	23.5	17.7	24.1	19.5	19.5	19.1	19.7	19.7
Total of 1 or more Math Diploma Exams	*	n/a	*	*	46.2	61.4	54.2	57.3	51.2	57.0	60.7	60.7	59.7	59.9	60.6
Biology 30	*	n/a	*	*	38.5	44.4	45.1	41.6	41.5	42.1	39.6	39.8	39.1	39.8	41.2
Chemistry 30	n/a	n/a	n/a	*	15.4	n/a	n/a	n/a	27.7	33.2	n/a	n/a	n/a	29.7	35.2
Physics 30	n/a	n/a	n/a	*	7.7	n/a	n/a	n/a	12.8	16.2	n/a	n/a	n/a	17.5	20.0
Science 30	*	n/a	*	*	0.0	0.2	0.0	0.0	0.0	0.2	7.0	7.0	7.4	8.2	9.0
Total of 1 or more Science Diploma Exams	*	n/a	*	*	38.5	54.6	51.3	50.0	47.5	50.9	56.7	56.5	56.1	56.1	57.6
Français 30-1	*	n/a	*	*	0.0	0.0	0.0	0.0	0.0	0.0	0.2	0.2	0.2	0.2	0.2
French Language Arts 30	*	n/a	*	*	0.0	0.0	0.0	0.0	0.0	0.0	2.7	2.7	2.7	2.7	2.9
Total of 1 or more French Diploma Exams	*	n/a	*	*	0.0	0.0	0.0	0.0	0.0	0.0	2.9	2.9	2.9	2.9	3.1

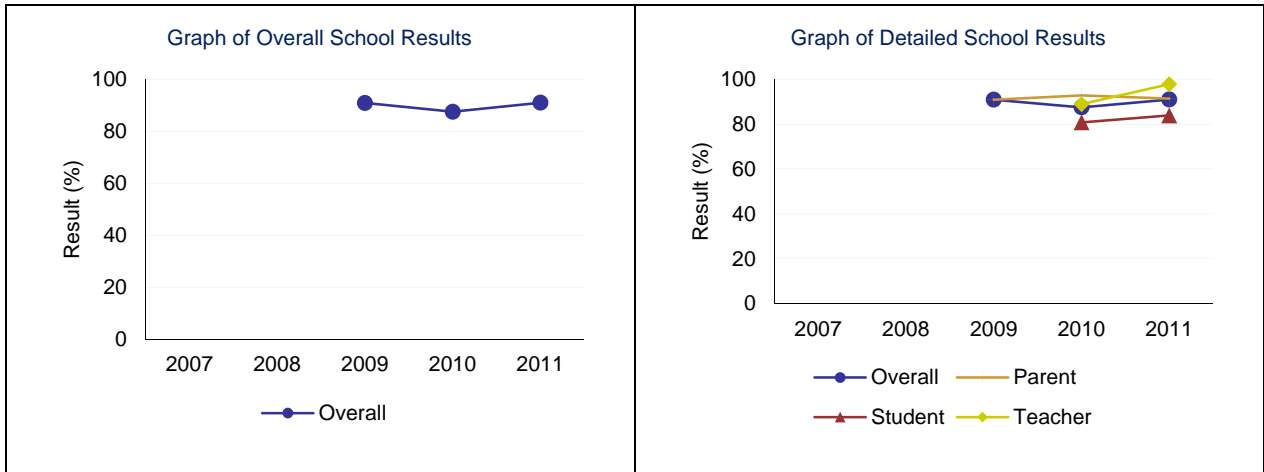
Exams																			
--------------	--	--	--	--	--	--	--	--	--	--	--	--	--	--	--	--	--	--	--

Note: Data values have been suppressed where the number of respondents is less than 6. Suppression is marked with an asterisk (*).

Citizenship – Measure Details

Percentages of teachers, parents and students who are satisfied that students model the characteristics of active citizenship.

	School					Authority					Province				
	2007	2008	2009	2010	2011	2007	2008	2009	2010	2011	2007	2008	2009	2010	2011
Overall	n/a	n/a	90.9	87.5	91.0	74.0	77.2	77.7	79.4	80.7	76.6	77.9	80.3	81.4	81.9
Teacher	n/a	n/a	n/a	88.9	97.8	88.3	92.0	93.1	92.7	94.9	89.9	90.6	91.8	93.0	92.7
Parent	n/a	*	90.9	92.8	91.4	69.7	74.0	73.7	74.8	74.7	72.6	74.7	77.4	78.5	78.6
Student	n/a	n/a	n/a	80.8	83.9	64.0	65.6	66.3	70.7	72.5	67.1	68.5	71.8	72.7	74.5

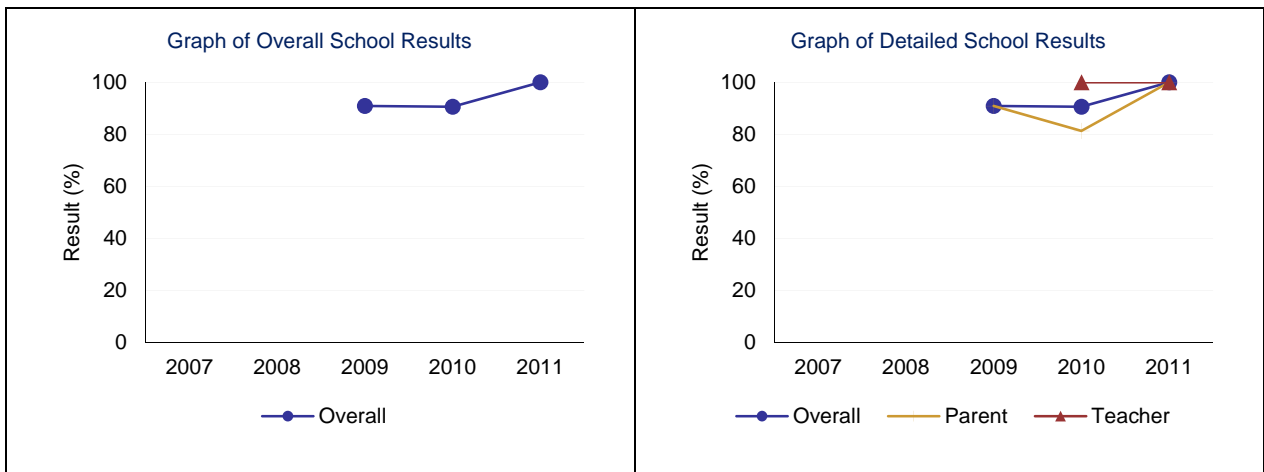


Note: Data values have been suppressed where the number of respondents is less than 6. Suppression is marked with an asterisk (*).

Work Preparation – Measure Details

Percentages of teachers and parents who agree that students are taught attitudes and behaviours that will make them successful at work when they finish school.

	School					Authority					Province				
	2007	2008	2009	2010	2011	2007	2008	2009	2010	2011	2007	2008	2009	2010	2011
Overall	n/a	n/a	90.9	90.6	100.0	77.7	83.3	81.0	79.5	82.1	77.1	80.1	79.6	79.9	80.1
Teacher	n/a	n/a	n/a	100.0	100.0	92.3	91.8	91.3	93.8	93.7	89.2	89.3	88.9	90.0	89.6
Parent	n/a	*	90.9	81.3	100.0	63.0	74.8	70.7	65.2	70.6	65.1	70.9	70.2	69.8	70.6

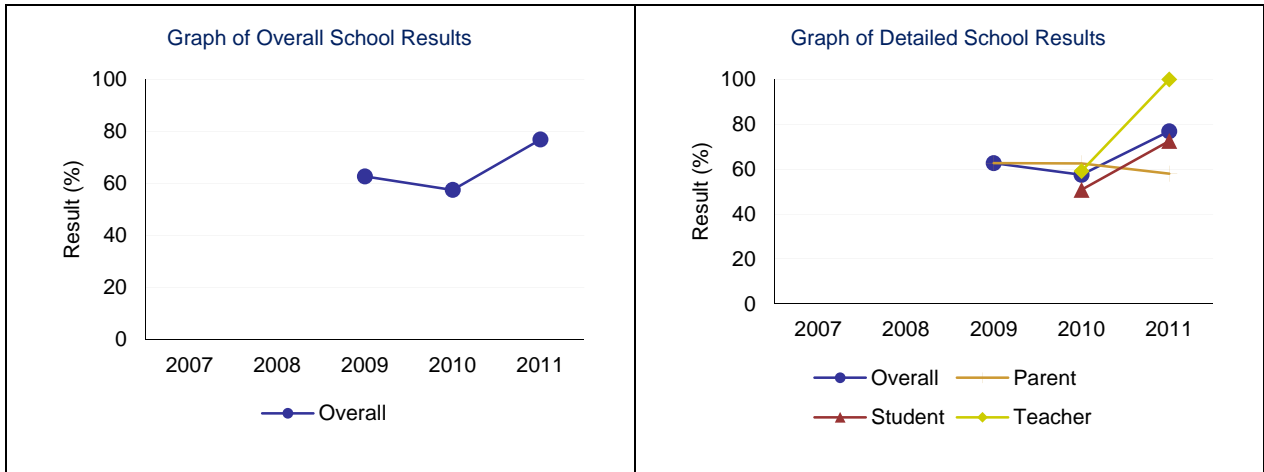


Note: Data values have been suppressed where the number of respondents is less than 6. Suppression is marked with an asterisk (*).

Program of Studies – Measure Details

Percentage of teachers, parents and students satisfied with the opportunity for students to receive a broad program of studies including fine arts, career, technology, and health and physical education.

	School					Authority					Province				
	2007	2008	2009	2010	2011	2007	2008	2009	2010	2011	2007	2008	2009	2010	2011
Overall	n/a	n/a	62.7	57.5	76.9	72.9	76.6	77.3	73.4	76.1	78.5	79.4	80.3	80.5	80.9
Teacher	n/a	n/a	n/a	59.1	100.0	80.9	86.3	85.8	83.1	85.5	85.7	86.4	86.8	87.7	87.6
Parent	n/a	*	62.7	62.6	58.0	70.5	73.1	73.0	69.2	71.4	76.9	77.6	78.7	78.0	78.3
Student	n/a	n/a	n/a	50.8	72.6	67.2	70.4	73.1	68.0	71.6	72.9	74.1	75.3	75.9	76.9

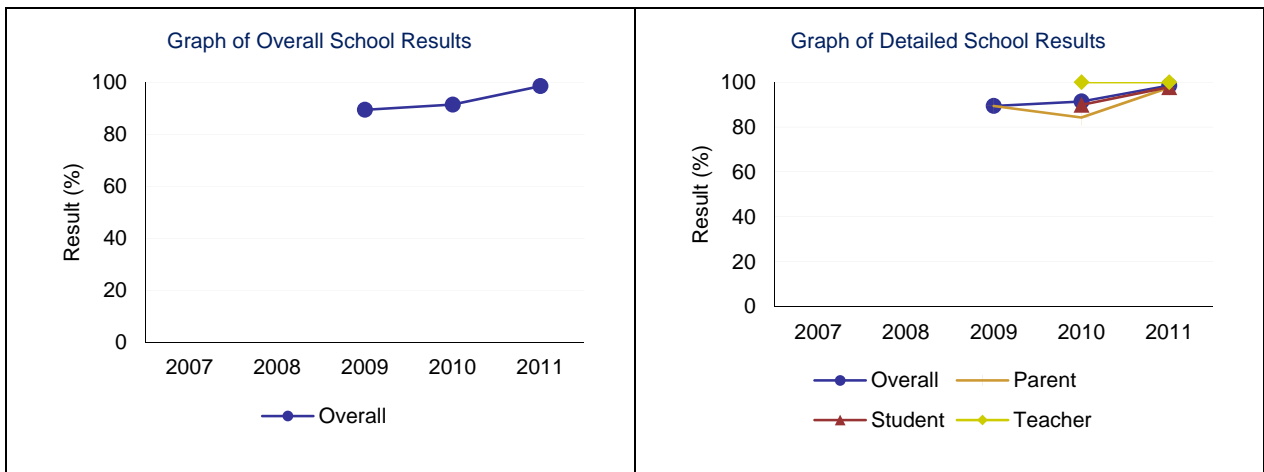


Note: Data values have been suppressed where the number of respondents is less than 6. Suppression is marked with an asterisk (*).

Education Quality – Measure Details

Percentage of teachers, parents and students satisfied with the overall quality of basic education.

	School					Authority					Province				
	2007	2008	2009	2010	2011	2007	2008	2009	2010	2011	2007	2008	2009	2010	2011
Overall	n/a	n/a	89.4	91.4	98.5	86.0	89.0	88.6	87.8	88.8	87.6	88.2	89.3	89.2	89.4
Teacher	n/a	n/a	n/a	100.0	100.0	94.7	96.2	95.3	96.9	98.2	94.7	94.9	95.3	95.6	95.5
Parent	n/a	*	89.4	84.3	97.6	78.4	84.4	82.9	79.3	81.4	81.8	83.0	84.4	83.9	84.2
Student	n/a	n/a	n/a	89.9	97.8	85.0	86.4	87.6	87.0	86.7	86.4	86.6	88.3	88.2	88.5

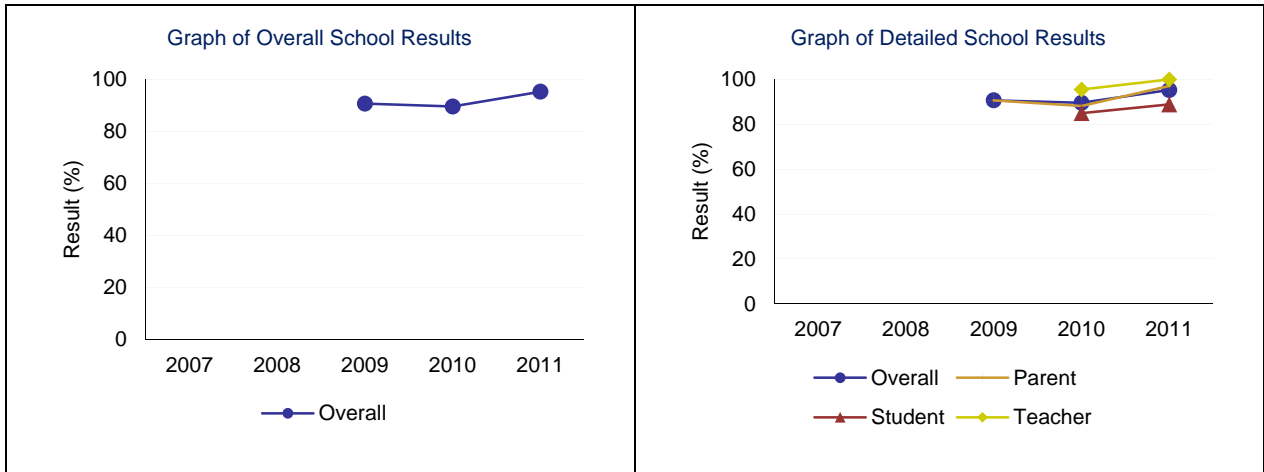


Note: Data values have been suppressed where the number of respondents is less than 6. Suppression is marked with an asterisk (*).

Safe and Caring – Measure Details

Percentage of teacher, parent and student agreement that: students are safe at school, are learning the importance of caring for others, are learning respect for others and are treated fairly in school.

	School					Authority					Province				
	2007	2008	2009	2010	2011	2007	2008	2009	2010	2011	2007	2008	2009	2010	2011
Overall	n/a	n/a	90.7	89.6	95.3	84.3	85.9	87.4	87.5	88.7	84.2	85.1	86.9	87.6	88.1
Teacher	n/a	n/a	n/a	95.5	100.0	93.0	95.2	95.8	95.4	97.4	92.6	93.1	93.8	94.4	94.5
Parent	n/a	*	90.7	88.2	97.1	81.7	83.7	85.7	85.2	86.4	81.7	83.2	85.3	86.1	86.6
Student	n/a	n/a	n/a	85.0	88.9	78.1	78.7	80.8	82.0	82.4	78.5	79.1	81.7	82.2	83.3

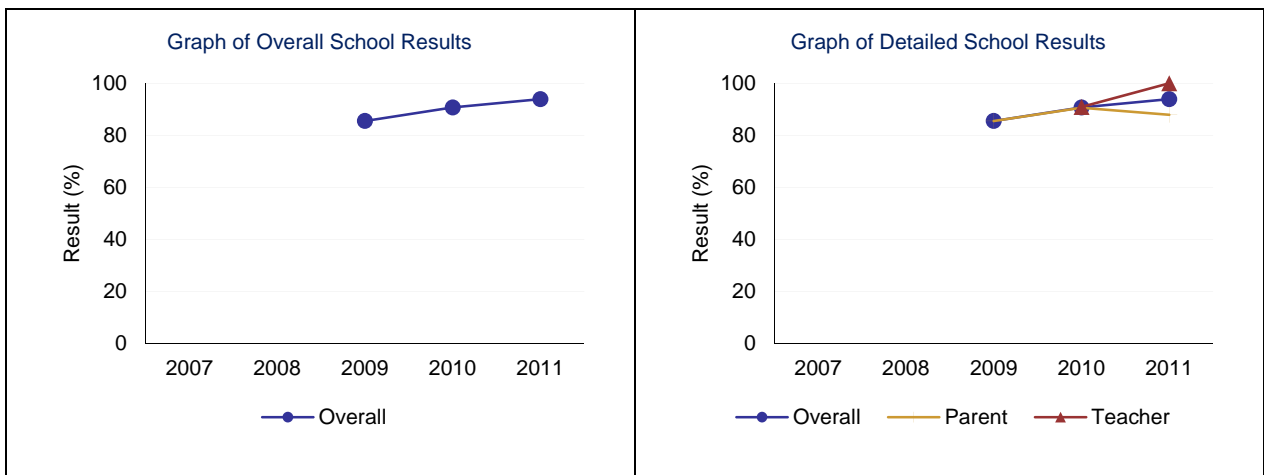


Note: Data values have been suppressed where the number of respondents is less than 6. Suppression is marked with an asterisk (*).

Parental Involvement – Measure Details

Percentage of teachers and parents satisfied with parental involvement in decisions about their child's education.

	School					Authority					Province				
	2007	2008	2009	2010	2011	2007	2008	2009	2010	2011	2007	2008	2009	2010	2011
Overall	n/a	n/a	85.5	90.7	93.9	75.6	78.3	79.4	77.2	77.9	77.5	78.2	80.1	80.0	79.9
Teacher	n/a	n/a	n/a	90.9	100.0	88.0	90.4	90.5	88.4	89.0	87.1	87.5	88.0	88.6	88.1
Parent	n/a	*	85.5	90.6	87.9	63.1	66.2	68.2	66.1	66.7	67.9	69.0	72.2	71.3	71.7

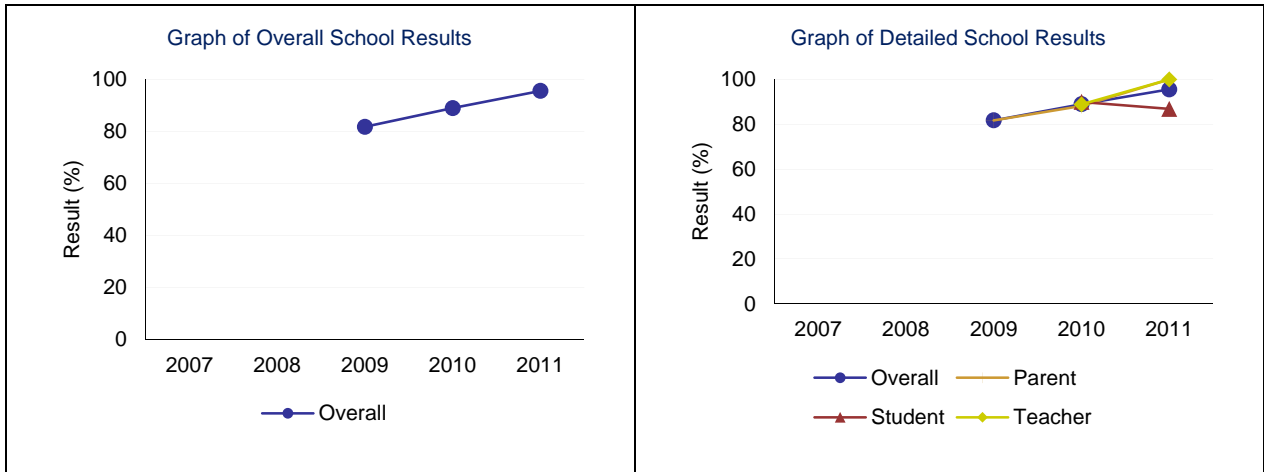


Note: Data values have been suppressed where the number of respondents is less than 6. Suppression is marked with an asterisk (*).

School Improvement – Measure Details

Percentages of teachers, parents and students indicating that their school and schools in their jurisdiction have improved or stayed the same the last three years.

	School					Authority					Province				
	2007	2008	2009	2010	2011	2007	2008	2009	2010	2011	2007	2008	2009	2010	2011
Overall	n/a	n/a	81.8	89.0	95.6	74.7	79.7	79.9	78.8	81.0	76.3	77.0	79.4	79.9	80.1
Teacher	n/a	n/a	n/a	88.9	100.0	78.0	84.7	83.4	85.3	86.1	74.5	75.6	78.2	80.8	80.1
Parent	n/a	*	81.8	88.2	100.0	70.4	76.5	76.6	71.7	75.8	75.1	75.9	78.1	77.0	77.3
Student	n/a	n/a	n/a	90.0	86.9	75.7	77.8	79.7	79.3	81.2	79.3	79.5	81.8	81.8	82.9



Note: Data values have been suppressed where the number of respondents is less than 6. Suppression is marked with an asterisk (*).

FUTURE CHALLENGES

Marketing continues to be a challenge. It seems there are many markets for NorthStar but we need to get people into these markets so that we can promote and grow the school. We have increased our presence at Christian School conferences, Home School conferences and International Christian school conferences. To continue to grow, we will need to continue to promote NorthStar in these areas.

NorthStar will continue to promote the school wherever there is a market and will add three levels of English as another Language classes to encourage more international students. We will also continue to develop our partnerships with schools, mission organizations and home school families.

FINANCIAL REPORT

